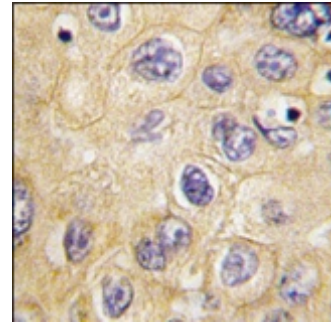


AP13330PU-N**Polyclonal Antibody to Claudin-1 / CLDN1 (Loop1) - Purified**

| | |
|--------------------------|--|
| Alternate names: | CLD1, PRO944, SEMP1, Senescence-associated epithelial membrane protein, UNQ481 |
| Quantity: | 0.4 ml |
| Concentration: | lot specific |
| Background: | Tight junctions represent one mode of cell-to-cell adhesion in epithelial or endothelial cell sheets, forming continuous seals around cells and serving as a physical barrier to prevent solutes and water from passing freely through the paracellular space. These junctions are comprised of sets of continuous networking strands in the outwardly facing cytoplasmic leaflet, with complementary grooves in the inwardly facing extracytoplasmic leaflet. CLDN1, a member of the claudin family, is an integral membrane protein and a component of tight junction strands. Loss of function mutations result in neonatal ichthyosis-sclerosing cholangitis syndrome. |
| Uniprot ID: | O95832 |
| NCBI: | 9606 |
| GeneID: | 9076 |
| Host / Isotype: | Rabbit / Ig |
| Immunogen: | This antibody is generated from rabbits immunized with a KLH conjugated synthetic peptide selected from the Loop1 region of human CLDN1. |
| Format: | State: Liquid purified Ig Purification: Protein A column, eluted with high and low pH buffers and neutralized immediately, followed by dialysis against PBS Buffer System: PBS with 0.09% (W/V) sodium azide |
| Applications: | ELISA: 1/1,000. Western blotting: 1/50 - 1/100. Immunohistochemistry: 1/10 - 1/50. Other applications not tested. Optimal dilutions are dependent on conditions and should be determined by the user. |
| Specificity: | This antibody reacts to Claudin 1 (CLDN1). Species: Human. Other species not tested. |
| Storage: | Store the antibody undiluted at 2-8°C for one month or (in aliquots) at -20°C for longer. Avoid repeated freezing and thawing. Shelf life: one year from despatch. |
| Caution: | This product is for research use only. Not for use in diagnostic or therapeutic procedures. |
| General Readings: | 1. Kinugasa,T., Anticancer Res. 27 (6A), 3729-3734 (2007) 2. Paschoud,S., Mod. Pathol. 20 (9), 947-954 (2007) 3. Morohashi,S., Int. J. Mol. Med. 20 (2), 139-143 (2007) 4. Krajewska,M., Prostate 67 (9), 907-910 (2007) |

Pictures:

Formalin-fixed and paraffin-embedded human hepatocarcinoma tissue reacted with hCLDN1-Loop1, which was peroxidase-conjugated to the secondary antibody, followed by DAB staining.



Western blot analysis of CLDN1 Antibody (Loop1) in Jurkat cell line lysates (35ug/lane). CLDN1 (arrow) was detected using the purified Pab (1:60 dilution).

