

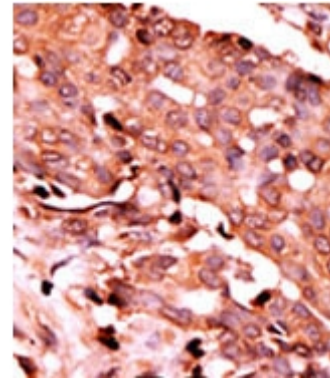
AP12574PU-N**Polyclonal Antibody to Caspase-6 pSer257 - Aff - Purified**

Alternate names:	Apoptotic protease Mch-2, CASP-6, CASP6, MCH-2, MCH2
Quantity:	0.4 ml
Concentration:	lot specific
Background:	Caspase 6 is a member of the cysteine-aspartic acid protease (caspase) family. Sequential activation of caspases plays a central role in the execution-phase of cell apoptosis. Caspases exist as inactive proenzymes which undergo proteolytic processing at conserved aspartic residues to produce 2 subunits, large and small, that dimerize to form the active enzyme. This protein could be processed by caspases 7, 8 and 10, and is thought to function as a downstream enzyme in the caspase activation cascade.
Uniprot ID:	P55212
NCBI:	9606
GeneID:	839
Host / Isotype:	Rabbit / Ig
Immunogen:	This antibody is generated from rabbits immunized with a KLH conjugated synthetic phosphopeptide corresponding to amino acid residues surrounding S257 of human caspase 6.
Format:	State: Liquid purified Ig fraction. Purification: Protein G Affinity Chromatography. Then, the antibody fraction is peptide affinity purified in a 2-step procedure with control and phosphorylated peptides. The phospho-specific antibody is eluted with high and low pH buffers and neutralized immediately, followed by dialysis against PBS. Buffer System: PBS with 0.09% (W/V) Sodium Azide as preservative.
Applications:	ELISA: 1/1,000. Western Blot: 1/100-1/500. Immunohistochemistry: 1/50-1/100. Other applications not tested. Optimal dilutions are dependent on conditions and should be determined by the user.
Specificity:	This antibody detects Caspase-6 pSer257. Predicted to cross react with Mouse (100% Antigen Homology). Species: Human. Other species not tested.
Add. Information:	Molecular weight: 33310 Da
Storage:	Store the antibody undiluted at 2-8°C for one month or (in aliquots) at -20°C for longer. Avoid repeated freezing and thawing. Shelf life: one year from despatch.

Caution: This product is for research use only. Not for use in diagnostic or therapeutic procedures.

- General Readings:**
1. Kalinin, A.E., et al., J. Invest. Dermatol. 124(1):46-55 (2005).
 2. Suzuki, A., et al., Oncogene 23(42):7067-7075 (2004).
 3. Horowitz, P.M., et al., J. Neurosci. 24(36):7895-7902 (2004).
 4. Schmeck, B., et al., Infect. Immun. 72(9):4940-4947 (2004).
 5. Mendez, E., et al., J. Virol. 78(16):8601-8608 (2004).

Pictures: Formalin-fixed and paraffin-embedded human cancer tissue reacted with the primary antibody, which was peroxidase-conjugated to the secondary antibody, followed by AEC staining. This data demonstrates the use of this antibody for immunohistochemistry; clinical relevance has not been evaluated.



The anti-Phospho-Caspase 6-S257 Pab (Cat.#AP12574PU-N) is used in Western blot to detect Phospho-Caspase 6-S257 in mouse stomach tissue lysate

