

AP11976PU-N**Polyclonal Antibody to UBE2L3 / UBCH7 (N-term) - Purified**

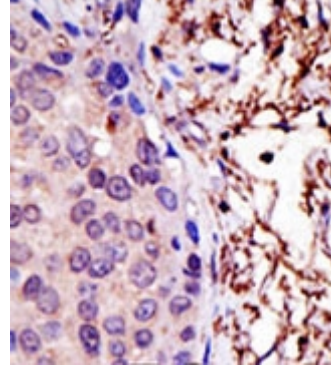
Alternate names:	E2-F1, L-UBC, UBCE7, Ubiquitin carrier protein L3, Ubiquitin-conjugating enzyme E2 L3, Ubiquitin-protein ligase L3
Quantity:	0.4 ml
Concentration:	lot specific
Background:	The modification of proteins with ubiquitin is an important cellular mechanism for targeting abnormal or short-lived proteins for degradation. Ubiquitination involves at least three classes of enzymes: ubiquitin-activating enzymes (E1s), ubiquitin-conjugating enzymes (E2s) and ubiquitin-protein ligases (E3s). UBE2L3 is a member of the E2 ubiquitin-conjugating enzyme family. This enzyme is demonstrated to participate in the ubiquitination of p53, c-Fos, and the NF- κ B precursor p105 in vitro.
Uniprot ID:	P68036
NCBI:	5874
GeneID:	7332
Host / Isotype:	Rabbit / Ig
Immunogen:	This antibody is generated from rabbits immunized with a KLH conjugated synthetic peptide selected from the N-terminal region of human UBE2L3.
Format:	State: Liquid purified Ig fraction. Purification: Protein G Chromatography, eluted with high and low pH buffers and neutralized immediately, followed by dialysis against PBS. Buffer System: PBS with 0.09% (W/V) Sodium Azide as preservative.
Applications:	ELISA: 1/1,000. Western Blot: 1/100-1/500. Immunohistochemistry: 1/50-1/100. Other applications not tested. Optimal dilutions are dependent on conditions and should be determined by the user.
Specificity:	This antibody is specific to UBE2L3/UBCH7 (N-term). Predicted to cross react with Mouse (100% Antigen Homology). Species: Human. Other species not tested.
Add. Information:	Predicted Molecular weight: 17861 Da
Storage:	Store the antibody undiluted at 2-8°C for one month or (in aliquots) at -20°C for longer. Avoid repeated freezing and thawing. Shelf life: one year from despatch.
Caution:	This product is for research use only. Not for use in diagnostic or therapeutic procedures.

General Readings:

1. Moynihan, T.P., et al., Genomics 51(1):124-127 (1998).
2. Moynihan, T.P., et al., Mamm. Genome 7(7):520-525 (1996).
3. Nuber, U., et al., J. Biol. Chem. 271(5):2795-2800 (1996).
4. Robinson, P.A., et al., Mamm. Genome 6(10):725-731 (1995).
5. Ardley, H.C., et al., Biochim. Biophys. Acta 1491 (1-3), 57-64 (2000).

Pictures:

Formalin-fixed and paraffin-embedded human cancer tissue reacted with the primary antibody, which was peroxidase-conjugated to the secondary antibody, followed by AEC staining. This data demonstrates the use of this antibody for immunohistochemistry; clinical relevance has not been evaluated.



Western blot analysis of anti-UBE2L3 Antibody (N-term) (Cat.#AP11976PU-N) to detect UBE2L3 in HL-60 cell lysate.

