

AP11605PU-N**Polyclonal Antibody to Calmodulin (C-term) - Purified****Alternate names:**

CALM, CALM1, CAM, CAM1

Quantity:

0.4 ml

Concentration:

1.64 mg/mL

Background:

Calmodulin is the archetype of the family of calcium-modulated proteins of which nearly 20 members have been found. They are identified by their occurrence in the cytosol or on membranes facing the cytosol and by a high affinity for calcium. Calmodulin contains 149 amino acids and has 4 calcium-binding domains. Its functions include roles in growth and the cell cycle as well as in signal transduction and the synthesis and release of neurotransmitters.

Uniprot ID:[P62158](#)**NCBI:**[9606](#)**GeneID:**[801](#)**Host / Isotype:**

Rabbit / Ig

Immunogen:

This antibody is generated from rabbits immunized with a KLH conjugated synthetic peptide selected from the C-terminal region of human calmodulin.

Remarks: The sequence of the antigen is 100% homologous to Mouse, Rabbit, and Zebrafish.

Format:

State: Liquid purified Ig fraction.

Purification: Protein G Chromatography eluted with high and low pH buffers and neutralized immediately, followed by dialysis against PBS.

Buffer System: PBS with 0.09% (W/V) Sodium Azide as preservative.

Applications:

ELISA: 1/1,000.

Western blot 1/100-1/500.

Immunohistochemistry: 1/10-1/50.

Other applications not tested. Optimal dilutions are dependent on conditions and should be determined by the user.

Specificity:

This antibody detects Calmodulin at C-term.

Species Reactivity:

Tested: Human

Expected from sequence similarity: Mouse, Rat, Rabbit, Chicken, Bovine, Xenopus and Zebrafish.

Add. Information:

Calculated Molecular weight: 16706 Da

Storage:

Store the antibody undiluted at 2-8°C for one month (in aliquots) at -20°C for longer. Avoid repeated freezing and thawing.

Shelf life: one year from despatch.

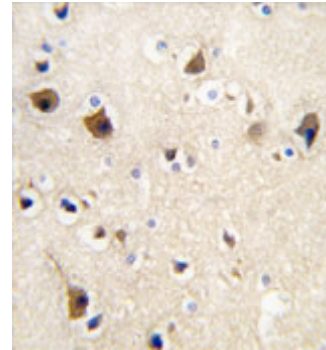
General Readings:

1. Radding, W., et al., AIDS Res. Hum. Retroviruses 16(15):1519-1525 (2000).
2. Wang, D., et al., J. Neurochem. 75(2):763-771 (2000).
3. Toutenhoofd, S.L., et al., Cell Calcium 23(5):323-338 (1998).
4. Matoba, R., et al., Gene 146(2):199-207 (1994).

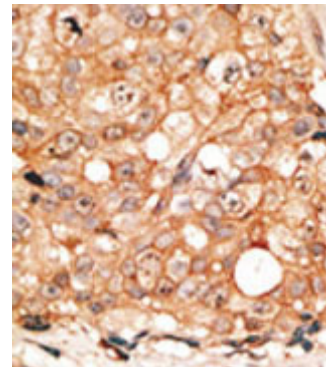
Pictures:

5. Berchtold, M.W., et al., Genomics 16(2):461-465 (1993).

Formalin-fixed and paraffin-embedded human brain tissue reacted with Calmodulin antibody (C-term), which was peroxidase-conjugated to the secondary antibody, followed by DAB staining. This data demonstrates the use of this antibody for immunohistochemistry; clinical relevance has not been evaluated.



Formalin-fixed and paraffin-embedded human breast carcinoma reacted with the primary antibody, which was peroxidase-conjugated to the secondary antibody, followed by DAB staining. This data demonstrates the use of this antibody for immunohistochemistry; clinical relevance has not been evaluated.



Western blot analysis of anti-Calmodulin Antibody (C-term) (Cat#AP11605PU-N) in Hela cell line lysates (35 µg/lane). Calmodulin(arrow) was detected using the purified Pab.

