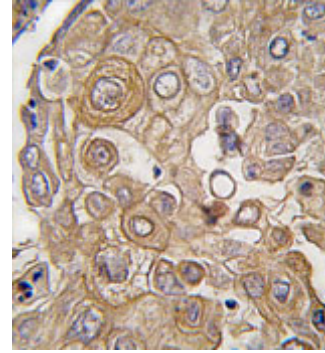


AP11536PU-N**Polyclonal Antibody to CD286 / TLR6 (C-term) - Purified**

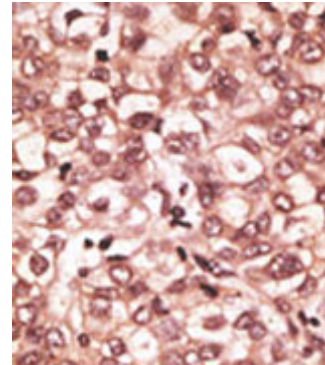
Alternate names:	Toll-like receptor 6
Quantity:	0.4 ml
Concentration:	lot specific
Background:	TLR6, a Type I membrane protein that belongs to the Toll-like receptor family, participates in the innate immune response to Gram-positive bacteria and fungi. It acts via MyD88 and TRAF6, leading to NF-kappa-B activation, cytokine secretion and the inflammatory response. The protein recognizes mycoplasmal macrophage-activating lipopeptide-2kD (MALP-2), soluble tuberculosis factor (STF), phenol-soluble modulins (PSM) and B.burgdorferi outer surface protein A lipoprotein (OspA-L) cooperatively with TLR2. It binds to TLR2 via their respective extracellular domains, and to MyD88 via their respective TIR domains. TLR6 is detected in monocytes, CD11c+ immature dendritic cells, plasmacytoid pre-dendritic cells and dermal microvessel endothelial cells.
Uniprot ID:	Q9Y2C9
NCBI:	9606
GeneID:	10333
Host / Isotype:	Rabbit / Ig
Immunogen:	This antibody is generated from rabbits immunized with a KLH conjugated synthetic peptide selected from C-terminal region of human TLR6.
Format:	State: Liquid Ig fraction Purification: Protein G column, eluted with high and low pH buffers and neutralized immediately, followed by dialysis against PBS Buffer System: PBS with 0.09% (W/V) sodium azide
Applications:	ELISA 1:1,000. Western blot 1:100 - 1:500. Immunohistochemistry 1:50 - 1:100. Other applications not tested. Optimal dilutions are dependent on conditions and should be determined by the user.
Specificity:	This antibody detects TLR6 at C-term. Species: Human. Other species not tested.
Add. Information:	Reacts with mouse in Western blot. Molecular weight: 91889 Da
Storage:	Store the antibody at 2 - 8 °C up to one month or (in aliquots) at -20 °C for longer. Avoid repeated freezing and thawing. Shelf life: one year from despatch.
General Readings:	1. Bulut, Y., et al., J. Immunol. 167(2):987-994 (2001). 2. Takeuchi, O., et al., Gene 231 (1-2), 59-65 (1999).

Pictures:

Formalin-fixed and paraffin-embedded human lung carcinoma tissue reacted with TLR6 antibody (C-term) (AP11536PU-N), which was peroxidase-conjugated to the secondary antibody, followed by DAB staining. This data demonstrates the use of this antibody for immunohistochemistry; clinical relevance has not been evaluated.



Formalin-fixed and paraffin-embedded human hepatocarcinoma reacted with the primary antibody, which was peroxidase-conjugated to the secondary antibody, followed by AEC staining. This data demonstrates the use of this antibody for immunohistochemistry; clinical relevance has not been evaluated.



Western blot analysis of anti-TLR6 Pab (AP11536PU-N) in mouse liver tissue lysate (35ug/lane). TLR6 (arrow) was detected using the purified Pab.

