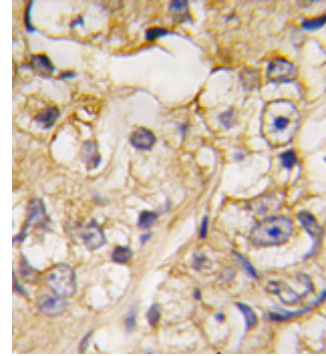


AP11383PU-N**Polyclonal Antibody to RGMB / DRAGON (Center) - Purified**

Alternate names:	DRG11-responsive axonal guidance and outgrowth of neurite, RGM domain family member B
Quantity:	0.4 ml
Concentration:	lot specific
Background:	Repulsive Guidance Molecule B (RGMB) is primarily expressed in the central nervous system. RGM A and B both appear at every level of the developing neural axis, where they colocalize to a large extent in the mantle layer, although only RGMA appears in the neuroepithelium, and only RGMB in the peripheral nervous system. During development, both RGMA and B appear also in lung and in limb cartilage, while RGMB has additional expression domains in pancreas.
Uniprot ID:	Q7TQ33
NCBI:	10090
GeneID:	68799
Host / Isotype:	Rabbit / Ig
Immunogen:	This antibody is generated from rabbits immunized with a KLH conjugated synthetic peptide selected from the Center region of human DRAGON.
Format:	State: Liquid Ig fraction Purification: Protein G column, eluted with high and low pH buffers and neutralized immediately, followed by dialysis against PBS. Buffer System: PBS with 0.09% (W/V) sodium azide
Applications:	ELISA 1:1,000. Western blot 1:50 - 1:100. Immunohistochemistry 1:10 - 1:50. Other applications not tested. Optimal dilutions are dependent on conditions and should be determined by the user.
Specificity:	This antibody detects DRAGON at Center. Species: Human, Mouse. Other species not tested.
Add. Information:	Molecular weight: 47181 Da
Storage:	Store the antibody at 2 - 8 °C up to one month or (in aliquots) at -20 °C for longer. Avoid repeated freezing and thawing. Shelf life: one year from despatch.
General Readings:	1. Schnichels,S., Gene Expr. Patterns 8 (1), 1-11 (2007). 2. Metzger,M., Dev. Dyn. 234 (1), 169-175 (2005). 3. Xia,Y., Endocrinology 146 (8), 3614-3621 (2005).

Pictures:

Formalin-fixed and paraffin-embedded human prostata carcinoma tissue reacted with DRAGON (RGMB) Antibody (Center) (AP11383PU-N), which was peroxidase-conjugated to the secondary antibody, followed by DAB staining. This data demonstrates the use of this antibody for immunohistochemistry; clinical relevance has not been evaluated.



Western blot analysis of DRAGON (RGMB) Antibody (Center) in K562 cell line lysates (35 µg/lane). DRAGON (arrow) was detected using the purified Pab (1:60 dilution).

