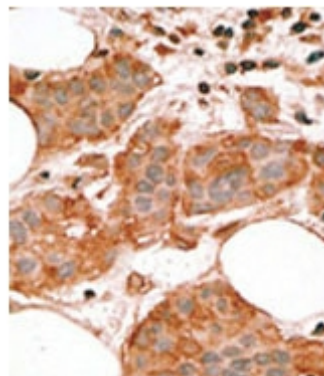


AP11296PU-N**Polyclonal Antibody to Bcl-2-like 14 (BH3 Domain) - Purified**

Alternate names:	Apoptosis facilitator Bcl-2-like protein 14, BCL2L14, BCLG, Bcl-G, Bcl-L-14
Quantity:	0.4 ml
Concentration:	lot specific
Background:	Bcl-G belongs to the BCL2 protein family. BCL2 family members form hetero- or homodimers and act as anti- or pro-apoptotic regulators that are involved in a wide variety of cellular activities. Overexpression of Bcl-G has been shown to induce apoptosis in cells.
Uniprot ID:	Q9BZR8
NCBI:	9606
GeneID:	79370
Host / Isotype:	Rabbit / Ig
Immunogen:	This antibody was developed against a synthetic peptide selected from the BH3 domain of human Bcl-G isoform 3 (Median form).
Format:	State: Liquid purified Ig fraction. Purification: Protein G Chromatography, eluted with high and low pH buffers and neutralized immediately, followed by dialysis against PBS. Buffer System: PBS containing 0.09% (W/V) Sodium Azide as preservative.
Applications:	ELISA: 1/1,000. Western blot: 1/100-1/500. Immunohistochemistry: 1/50-1/100. Other applications not tested. Optimal dilutions are dependent on conditions and should be determined by the user.
Specificity:	This antibody is specific to Bcl-G (BH3 Domain). Species: Human. Other species not tested.
Add. Information:	Calculated MW: 36598 Da
Storage:	Store the antibody undiluted at 2-8°C for one month or (in aliquots) at -20°C for longer. Avoid repeated freezing and thawing. Shelf life: one year from despatch.
Caution:	This product is for research use only. Not for use in diagnostic or therapeutic procedures.
General Readings:	1. Benito, Adalberto, et al. J. Biol. Chem. 2006 Dec 15;281(50):38351-38357. (Applications: WB) 2. Ozalp, S.S., et al., Eur J Gynaecol Oncol 23(5):419-422 (2002). 3. Guo, B., et al., J. Biol. Chem. 276(4):2780-2785 (2001).

Pictures:

Formalin-fixed and paraffin-embedded human cancer tissue reacted with the primary antibody, which was peroxidase-conjugated to the secondary antibody, followed by AEC staining. This data demonstrates the use of this antibody for immunohistochemistry; clinical relevance has not been evaluated.



Western blot analysis of anti-Bcl-G BH3 Domain Pab (Cat. #AP11296PU-N) in K562 cell line lysates (35ug/lane). Bcl-G BH3 Domain (arrow) was detected using the purified Pab.

