

**AP09500PU-N****Polyclonal Antibody to BRCA1 / RNF53 - Aff - Purified****Alternate names:**

Breast cancer type 1 susceptibility protein, RING finger protein 53

**Quantity:**

0.1 mg

**Concentration:**

1,0 mg/ml

**Background:**

BRCA1 (breast and ovarian cancer susceptibility protein 1) is a nuclear phosphoprotein that plays a role in maintaining genomic stability and acts as a tumor suppressor. It combines with other tumor suppressors, DNA damage sensors, and signal transducers to form a large multi-subunit protein complex known as BASC (for BRCA1 associated genome surveillance complex). BRCA1 associates with RNA polymerase II, and through the C terminal domain, also interacts with histone deacetylase complex. This protein thus plays a role in transcription, DNA repair of double-stranded breaks, and recombination. Mutations in the BRCA1 gene are responsible for approximately 40% of inherited breast cancers and more than 80% of inherited breast and ovarian cancers. Alternative splicing plays a role in modulating the subcellular localization and physiological function of this gene. Many alternatively spliced transcript variants have been described for this gene but only some have had their full length natures identified.

**Uniprot ID:**[P38398](#)**NCBI:**[NP\\_009225](#)**GenID:**[672](#)**Host:**

Rabbit

**Immunogen:**

Synthesized non-phosphopeptide derived from human BRCA1 around the phosphorylation site of serine 1524 (Y-P-SP-Q-E)

**Format:****State:** Liquid purified Ig fraction**Purification:** Affinity chromatography**Buffer System:** Phosphate buffered saline (without Mg<sup>2+</sup> and Ca<sup>2+</sup>), pH 7.4, 150mM NaCl, 0.02% sodium azide and 50% glycerol**Applications:****Immunofluorescence:** 1/100 - 1/200.**Western Blot:** 1/500 - 1/1000; Incubate membrane with diluted antibody in 5% nonfat milk, 1X TBS, 0,1% Tween-20 at 4°C with gentle shaking, overnight.

Other applications not tested. Optimal dilutions are dependent on conditions and should be determined by the user.

**Specificity:**

BRCA1 Antibody detects endogenous levels of total BRCA1protein.

**Species:** Human.

Other species not tested.

**Storage:**

Store the antibody at -20°C.

Avoid repeated freezing and thawing.

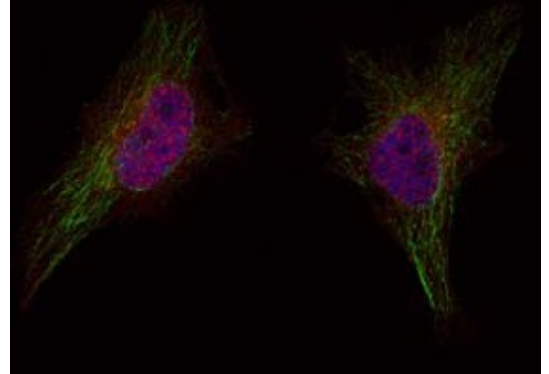
Shelf life: one year from despatch.

**General Readings:**

1. Lin SY, et al. (2004) Proc Natl Acad Sci U S A, 101(17): 6484-6489
2. Zhang J, et al. (2004) Mol Cell Biol; 24(2): 708-718
3. Beger C, et al. (2001) Proc Natl Acad Sci U S A; 98(1): 130-135
4. Gardner K, et al. (2001) Breast Cancer Res; 3(1): 11-13
5. Zheng L, et al. (2001) Proc Natl Acad Sci U S A; 98(17): 9587-9592

**Pictures:**

Immunofluorescence staining of methanol-fixed HeLa cells using BRCA1 Antibody



Western Blot analysis of extracts from 293 and MCF cells using BRCA1 antibody

