

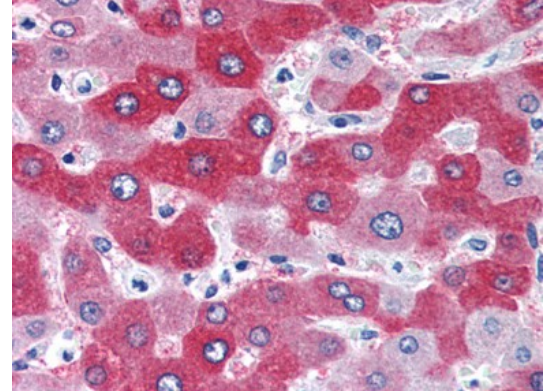
AP08970PU-N**Polyclonal Antibody to 58K Golgi Protein (203-216) - Aff - Purified**

Alternate names:	FTCD, Formimidoyltransferase-cyclodeaminase, Formiminotransferase-cyclodeaminase, Golgi Marker 58K, Golgi marker, LCHC1
Quantity:	50 µg
Concentration:	0.5 mg/ml
Background:	58K Golgi protein antibodies are excellent for use as markers for the Golgi complex. The 58K Golgi protein has been identified as being FTCD, a bifunctional enzyme that channels 1-carbon units from formiminoglutamate, a metabolite of the histidine degradation pathway, to the folate pool. Defects in FTCD are the cause of glutamate formiminotransferase deficiency; also known as formiminoglutamicaciduria (FIGLU-uria). It is an autosomal recessive disorder. Features of a severe phenotype, include elevated levels of formiminoglutamate (FIGLU) in the urine in response to histidine administration, megaloblastic anemia, and mental retardation. Features of a mild phenotype include high urinary excretion of FIGLU in the absence of histidine administration, mild developmental delay, and no hematological abnormalities.
Uniprot ID:	O95954
NCBI:	NP_006648.1
GenelD:	10841
Host:	Goat
Immunogen:	Peptide sequence from the internal region of Human FTCD (NP_006648.1; NP_996848.1) Genename: FTCD AA Sequence: C-LREQGRGKDQPGRL Remarks: Percent identity by BLAST analysis: Human, Gorilla, Gibbon, Mouse, Rat, Hamster, Bovine, Bat, Pig (100%); Elephant, Platypus (93%); Monkey, Panda, Rabbit, Horse, Lizard, Xenopus, Frog, Stickleback (86%)
Format:	State: Liquid purified Ig fraction Purification: Immunoaffinity Chromatography Buffer System: Tris saline, pH~7.3 Preservatives: 0.02% Sodium Azide Stabilizers: 0.5% BSA
Applications:	ELISA: 1/32000. Immunohistochemistry on Paraffin Sections: 3.75 µg/ml. Western Blot: 0.03 - 0.1 µg/ml. Other applications not tested. Optimal dilutions are dependent on conditions and should be determined by the user.
Specificity:	This antibody recognizes 58KGolgi protein (Internal).

Species Reactivity: **Tested:** Human, Gorilla, Gibbon, Mouse, Rat, Hamster, Bovine, Bat, Pig, Elephant, Platypus, Monkey, Panda, Rabbit, Horse, Lizard, Xenopus, Frog, Stickleback

Storage: Store undiluted at 2-8°C for one month or (in aliquots) at -20°C for longer. Avoid repeated freezing and thawing. Shelf life: one year from despatch.

Pictures: Formalin-Fixed, Paraffin-Embedded Human Liver stained with 58K Golgi Protein Antibody Cat.-No AP08970PU-N at 3.75 µg/ml after heat-induced antigen retrieval.



Human Liver lysate stained with 58K Golgi Protein Antibody Cat.-No AP08970PU-N at 0.03 µg/ml (RIPA buffer, 35µg total protein per lane). Primary incubated for 1 hour. Detected by chemiluminescence.

