

AP08894PU-N**Polyclonal Antibody to Triosephosphate isomerase (TPI1)
(274-286) - Aff - Purified**

Alternate names:	TIM, TPI, Triose-phosphate isomerase
Quantity:	50 µg
Concentration:	0.5 mg/ml
Background:	TPI1 / TPI encodes an enzyme, consisting of two identical proteins, which catalyzes the isomerization of glyceraldehydes 3-phosphate (G3P) and dihydroxy-acetone phosphate (DHAP) in glycolysis and gluconeogenesis. Mutations in this gene are associated with triosephosphate isomerase deficiency. Pseudogenes have been identified on chromosomes 1, 4, 6 and 7. Alternative splicing results in multiple transcript variants.
Uniprot ID:	P60174
NCBI:	NP_000356.1
GeneID:	7167
Host / Isotype:	Goat / IgG
Immunogen:	Synthetic peptide from C-terminus of human TPI1 AA Sequence: C-LKPEFVDIINAKQ Remarks: Percent identity by BLAST analysis: Human, Chimpanzee, Gorilla, Orangutan, Gibbon, Monkey, Marmoset, Mouse, Rat, Hamster, Elephant, Panda, Bat, Bovine, Dog, Horse, Rabbit, Salmon, Pike (100%); Pig, Chicken, Xenopus, Smelt, Pufferfish, Drosophila (92%); Catfish, Stickleback, Zebrafish, Neurospora, Beetle, Sordaria, Tick, Chaetomium, Thielavia (85%)
Format:	State: Liquid Ig fraction Purification: Immunoaffinity chromatography Buffer System: Tris saline buffer, pH 7.3, 0.5% BSA, 0.02% sodium azide
Applications:	ELISA: 1/16000. Immunohistochemistry on Paraffin Sections: 5 µg/ml. Western Blot: 0.01 - 0.03 µg/ml. Other applications not tested. Optimal dilutions are dependent on conditions and should be determined by the user.
Specificity:	This antibody detects Triosephosphate Isomerase (TPI1) at aa 274-286.
Species Reactivity:	Tested: Human, Chimpanzee, Gorilla, Orangutan, Gibbon, Monkey, Marmoset, Mouse, Rat, Hamster, Elephant, Panda, Bat, Bovine, Dog, Horse, Rabbit, Salmon, Pike, Pig, Chicken, Xenopus, Smelt, Pufferfish, Drosophila, Catfish, Stickleback, Zebrafish, Neurospora, Beetle, Sordaria, Tick, Chaetomium, Thielavia
Storage:	Store the antibody at 2 - 8 °C up to one month or (in aliquots) at -20 °C for longer. Avoid repeated freezing and thawing. Shelf life: one year from despatch.

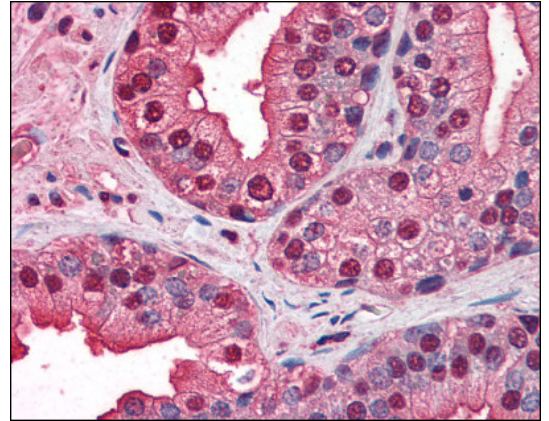
Product Citations:

Originator or purchased from resellers:

1. Identification of differentially regulated proteins in a patient with Leber's Congenital Amaurosis--a proteomic study. Vorum H, stergaard M, Rice GE, Honor B, Bek T. Proteome science. 2007 5:5. [PubMed:17326818] [PMC:PMC1821315]
2. Identification of differentially expressed proteins in spontaneous thymic lymphomas from knockout mice with deletion of p53. Honor B, Buus S, Classon MH. Proteome science. 2008 6:18. (WB; Mouse) [PubMed:18544163] [PMC:PMC2491604]

Pictures:

Prostate: Formalin-Fixed, Paraffin-Embedded (FFPE)



Antibody staining (0.003 µg/ml) of human liver lysate (RIPA buffer, 30 µg total protein per lane). Primary incubated for 1 hour. Detected by western blot using chemiluminescence.

