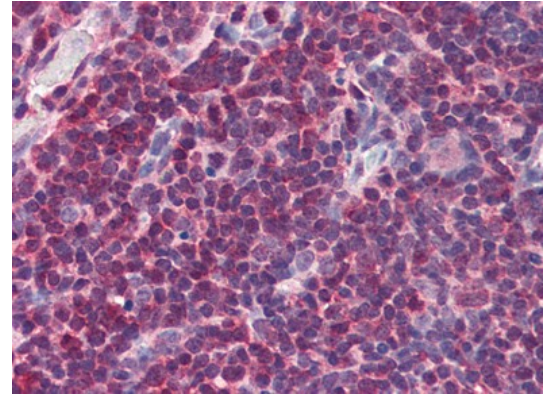


**AP08883PU-N****Polyclonal Antibody to MIF (103-115) - Aff - Purified**

<b>Alternate names:</b>	GLIF, Glycosylation-inhibiting factor, MMIF, Macrophage migration inhibitory factor, Phenylpyruvate tautomerase
<b>Quantity:</b>	50 µg
<b>Concentration:</b>	0.5 mg/ml
<b>Background:</b>	MIF is a proinflammatory cytokine involved in many inflammatory reactions and disorders. MIF (macrophage migration inhibitory factor) was one of the first cytokines to be discovered and was initially described as a T cell-derived factor that inhibits the random migration of macrophages (Weiser 1989). Recently, MIF was rediscovered as a pituitary hormone that act as the counterregulatory hormone for glucocorticoid action within the immune system (Bernhagen 1993, Mitchell 1995). MIF was released from macrophages and T cells in response to physiological concentrations of glucocorticoids. The secreted MIF counter-regulates the immunosuppressive effects of steroids on immune cell activation and cytokine production (Bucala 1998). MIF plays a critical role in the host control of inflammation and immunity. MIF is involved in both autoimmune disorders and tumorigenesis.
<b>Uniprot ID:</b>	<a href="#">P14174</a>
<b>NCBI:</b>	<a href="#">NP_002406.1</a>
<b>GeneID:</b>	<a href="#">4282</a>
<b>Host / Isotype:</b>	Goat / IgG
<b>Immunogen:</b>	Synthetic peptide from C-terminus of Human MIF <b>AA Sequence:</b> C-NAANVGWNNSTFA <b>Remarks:</b> Percent identity by BLAST analysis: Human, Gorilla, Gibbon, Monkey (100%); Mouse, Rat, Sheep, Elephant, Bovine, Horse, Rabbit, Pig, Turkey, Chicken, Platypus, Xenopus (92%); Hamster (85%)
<b>Format:</b>	<b>State:</b> Liquid purified IgG fraction <b>Purification:</b> Immunoaffinity Chromatography <b>Buffer System:</b> Tris saline buffer, pH 7.3 containing 0.5% BSA as stabilizer and 0.02% Sodium Azide as preservative
<b>Applications:</b>	<b>ELISA:</b> 1/128000. <b>Immunohistochemistry on Paraffin Sections:</b> 2.5 µg/ml. <b>Western Blot:</b> 0.01 - 0.03 µg/ml. Other applications not tested. Optimal dilutions are dependent on conditions and should be determined by the user.
<b>Specificity:</b>	This antibody recognizes Macrophage Migration Inhibitory Factor (MIF) at aa 103-115.
<b>Species Reactivity:</b>	<b>Tested:</b> Human, Gorilla, Gibbon, Monkey, Mouse, Rat, Sheep, Elephant, Bovine, Horse, Rabbit, Pig, Turkey, Chicken, Platypus, Xenopus, Hamster

**Storage:** Store the antibody undiluted at 2-8°C for one month or (in aliquots) at -20°C for longer.  
 Avoid repeated freezing and thawing.  
 Shelf life: one year from despatch.

**Pictures:** Thymus: Formalin-Fixed, Paraffin-Embedded (FFPE) using MIF Antibody



MIF Antibody (0.01µg/ml) staining of Human Thymus lysate (35µg protein in RIPA buffer). Primary incubation was 1 hour. Detected by chemiluminescence.

