

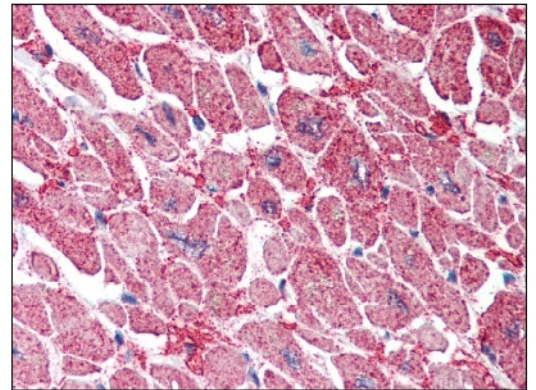
AP08565PU-N**Polyclonal Antibody to KPNA3 / Importin alpha-3 (509-521) - Aff - Purified**

Alternate names:	Importin alpha Q2, Karyopherin subunit alpha-3, QIP2, SRP1-gamma
Quantity:	50 µg
Concentration:	0.5 mg/ml
Background:	The transport of molecules between the nucleus and the cytoplasm in eukaryotic cells is mediated by the nuclear pore complex (NPC) which consists of 60-100 proteins and is probably 120 million daltons in molecular size. Small molecules (up to 70 kD) can pass through the nuclear pore by nonselective diffusion; larger molecules are transported by an active process. Most nuclear proteins contain short basic amino acid sequences known as nuclear localization signals (NLSs). KPNA3, encodes a protein similar to certain nuclear transport proteins of Xenopus and human. The predicted amino acid sequence shows similarity to Xenopus importin, yeast SRP1, and human RCH1 (KPNA2), respectively. The similarities among these proteins suggests that karyopherin alpha-3 may be involved in the nuclear transport system.
Uniprot ID:	O00505
NCBI:	NP_002258.2
GenelD:	3839
Host / Isotype:	Goat / IgG
Immunogen:	Synthetic peptide from the C-terminus of Human KPNA3. AA Sequence: C-DPTANLQTKEFNF Remarks: Percent identity by BLAST analysis: Human, Gibbon, Monkey, Marmoset, Mouse, Rat, Bovine, Dog, Bat, Hamster, Elephant, Panda, Horse, Rabbit, Pig, Opossum, Turkey, Chicken, Platypus, Lizard (100%); Xenopus (85%)
Format:	State: Liquid purified Ig fraction Purification: Immunoaffinity Chromatography Buffer System: Tris saline buffer, pH 7.3 containing 0.5% BSA as stabilizer and 0.02% Sodium Azide as preservative
Applications:	ELISA. Immunohistochemistry on Paraffin Sections: 5 µg/ml. Western Blot: 0.1 - 0.5 µg/ml. Other applications not tested. Optimal dilutions are dependent on conditions and should be determined by the user.
Specificity:	Recognizes Karyopherin Alpha 3 (KPNA3) at aa 509-521.
Species Reactivity:	Tested: Human, Gibbon, Monkey, Marmoset, Mouse, Rat, Bovine, Dog, Bat, Hamster, Elephant, Panda, Horse, Rabbit, Pig, Opossum, Turkey, Chicken, Platypus, Lizard, Xenopus

Storage: Store the antibody undiluted at 2-8°C for one month or (in aliquots) at -20°C for longer.
Avoid repeated freezing and thawing.
Shelf life: one year from despatch.

Product Citations: **Originator or purchased from resellers:**
1. Notch1 signaling is mediated by importins alpha 3, 4, and 7. Huenniger K, Krmer A, Soom M, Chang I, Khler M, Depping R, Kehlenbach RH, Kaether C. Cellular and molecular life sciences : CMLS. 2010 67:3187-96. [PubMed:20454918] [PMC:PMC3128743] 2. Axotomy induces axonogenesis in hippocampal neurons by a mechanism dependent on importin . Ohara R, Hata K, Yasuhara N, Mehmood R, Yoneda Y, Nakagawa M, Yamashita T. Biochemical and biophysical research communications. 2011 405:697-702. (ICC; Rat) [PubMed:21291862]

Pictures: Heart: Fromalin-Fixed Paraffin-Embedded (FFPE)



Antibody staining (0.1 µg/ml) of Human Testis lysate (RIPA buffer, 35 µg total protein per lane). Primary incubated for 1 hour. Detected by western blot using Chemiluminescence.

