

AP08562PU-N**Polyclonal Antibody to MPP6 (2-14) - Aff - Purified****Alternate names:**

MAGUK p55 subfamily member 6, VAM1, Veli-associated MAGUK 1

Quantity:

50 µg

Concentration:

0.5 mg/ml

Background:

Progression of cells from interphase to mitosis involves alterations in cell structures and activities. The transition from G2 to M phase is induced by M phase promoting factor, or MPF. In M phase, many proteins are phosphorylated directly by MPF or indirectly by kinases activated by MPF. These M phase phosphoproteins (MPPs, or MPHOSPHs) permit disassembly of interphase structures and generation of M phase enzymatic activities and structures. VAM1 or MPP6 is thought to be a nucleolus specific exosome co factor, required for its role in the maturation of 5.8S rRNA.

Uniprot ID:[Q9NZW5](#)**NCBI:**[NP_057531.2](#)**GeneID:**[51678](#)**Host / Isotype:**

Goat / IgG

Immunogen:

Synthetic peptide from the N-terminus of Human MPP6

AA Sequence:

QQVLENLTELPS-C

Remarks: Percent identity by BLAST analysis: Human, Gibbon, Monkey, Marmoset, Mouse, Rat, Rabbit (100%); Dog, Bovine, Bat, Elephant, Panda, Horse, Pig (92%); Platypus (85%)

Format:**State:** Liquid purified Ig fraction**Purification:** Immunoaffinity Chromatography**Buffer System:** Tris saline buffer, pH 7.3 containing 0.5% BSA as stabilizer and 0.02% Sodium Azide as preservative**Applications:****ELISA:** 1/128000.**Immunohistochemistry on Paraffin Sections:** 5 µg/ml.**Western Blot:** 1/128000, 0.3 - 1 µg/ml.

Other applications not tested. Optimal dilutions are dependent on conditions and should be determined by the user.

Specificity:

Recognizes MAGUK Protein VAM-1 (MPP6) at aa 2-14.

Species Reactivity:**Tested:** Human, Gibbon, Monkey, Marmoset, Mouse, Rat, Rabbit, Dog, Bovine, Bat, Elephant, Panda, Horse, Pig, Platypus**Storage:**

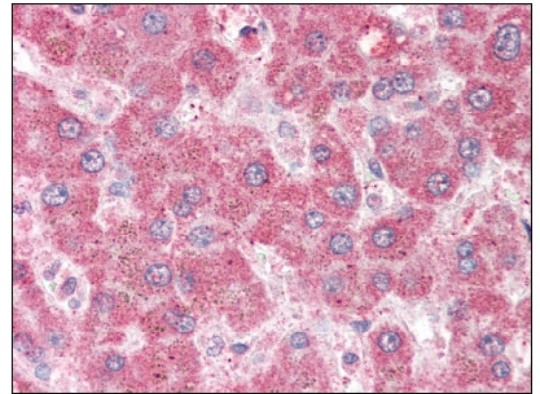
Store the antibody undiluted at 2-8°C for one month or (in aliquots) at -20°C for longer.

Avoid repeated freezing and thawing.

Shelf life: one year from despatch.

Pictures:

Liver: Formalin-Fixed Paraffin-Embedded (FFPE)



Antibody staining (0.3 µg/ml) of 293 lysate (RIPA buffer, 35 µg total protein per lane). Primary incubated for 1 hour. Detected by western blot using Chemiluminescence.

