

AP08101PU-S**Polyclonal Antibody to CDK6 - Aff - Purified****Alternate names:**

Cell division protein kinase 6, PLSTIRE, Serine/threonine-protein kinase PLSTIRE

Quantity:

50 µg

Concentration:

1.0 mg/ml

Background:

Cdk6 is a member of the cyclin-dependent protein kinase (CDK) family. CDK family members are highly similar to the gene products of *Saccharomyces cerevisiae* cdc28, and *Schizosaccharomyces pombe* cdc2, and are known to be important regulators of cell cycle progression. This kinase is a catalytic subunit of the protein kinase complex that is important for cell cycle G1 phase progression and G1/S transition. The activity of Cdk6 first appears in mid-G1 phase, and is controlled by regulatory subunits including D-type cyclins and members of INK4 family of CDK inhibitors. This kinase, as well as CDK4, has been shown to phosphorylate, and thus regulate the activity of, tumor suppressor protein Rb.

Uniprot ID:[Q00534](#)**NCBI:**[NP_001138778.1](#)**GeneID:**[1021](#)**Host:**

Rabbit

Immunogen:The antiserum was produced against synthesized non-phosphopeptide derived from human CDK6 around the phosphorylation site of Tyrosine 13 (Q-Q-Y_p-E-C).**Format:****State:** Liquid purified Ig fraction.**Purification:** Immunoaffinity Chromatography using epitope-specific immunogen.**Buffer System:** PBS (without Mg²⁺ and Ca²⁺), pH 7.4, 150 mM NaCl, 0.02% Sodium Azide and 50% Glycerol.**Applications:**

Immunofluorescence: 1/100~1/200.

Immunohistochemistry on Paraffin-Embedded Sections: 1/50~1/100.

Other applications not tested. Optimal dilutions are dependent on conditions and should be determined by the user.

Specificity:

This antibody detects endogenous levels of total CDK6 protein.

Species: Human and Mouse.

Other species not tested.

Storage:

Store the antibody (in aliquots) at -20°C.

Avoid repeated freezing and thawing.

Shelf life: One year from despatch.

General Readings:

1. Flores-Rozas, H. et al. (1994) Proc. Natl. Acad. Sci. USA 91, 8655-8659.

2. Pestell, R.G. et al. (1999) Endocr. Rev. 20, 501-534.

3. Lukas, J. et al. (1996) Mol. Cell. Biol. 16, 6917-1625.

Pictures:

Figure 1. Immunohistochemical analysis of paraffin-embedded human colon carcinoma tissue using CDK6 Antibody AP08101PU.

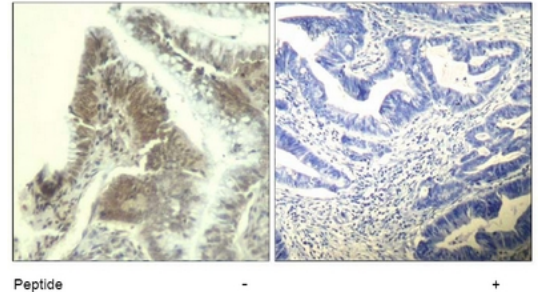


Figure 2. Immunofluorescence staining of methanol-fixed HeLa cells using CDK6 antibody AP08101PU (Red).

