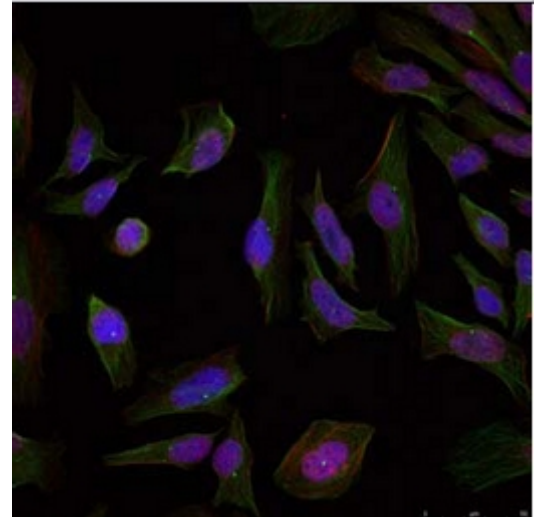


**AP08044PU-S****Polyclonal Antibody to Progesterone receptor - Aff - Purified**

|                          |  |
|--------------------------|--|
| <b>Alternate names:</b>  | NR3C3, Nuclear Receptor Subfamily 3 Group C Member 3, PGR, PR  |
| <b>Quantity:</b>         | 50 µg  |
| <b>Concentration:</b>    | 1 mg/ml  |
| <b>Uniprot ID:</b>       | <a href="#">P06401</a>   |
| <b>NCBI:</b>             | <a href="#">NP_000917.3</a>  |
| <b>GeneID:</b>           | <a href="#">5241</a>   |
| <b>Host:</b>             | Rabbit   |
| <b>Immunogen:</b>        | The antiserum was produced against synthesized non-phosphopeptide derived from human Progesterone Receptor around the phosphorylation site of Serine 190 (G-L-SP-P-A).   |
| <b>Format:</b>           | <b>State:</b> Liquid purified Ig fraction.<br><b>Purification:</b> Immunoaffinity Chromatography.<br><b>Buffer System:</b> PBS (without Mg <sup>2+</sup> and Ca <sup>2+</sup> ), pH 7.4, 150 mM NaCl, 0.02% Sodium Azide and 50% Glycerol.         |
| <b>Applications:</b>     | Western Blot (1/500-1/1000).<br>Immunofluorescence (1/100-1/200).<br>Other applications not tested. Optimal dilutions are dependent on conditions and should be determined by the user.  |
| <b>Specificity:</b>      | Progesterone Receptor Antibody AP08044PU detects endogenous levels of total progesterone receptor protein.<br><b>Species:</b> Human.<br>Other species not tested.  |
| <b>Storage:</b>          | Store the antibody (in aliquots) at -20°C.<br>Avoid repeated freezing and thawing.<br>Shelf life: One year from despatch.  |
| <b>General Readings:</b> | 1. Narayanan R, et al. (2005) Mol Cell Biol; 25(8): 2885-98.<br>2. Knotts TA, et al. (2001) J Biol Chem; 276(11): 8475-83.<br>3. Clemm DL, et al. (2000) Mol Endocrinol; 14(1): 52-65.<br>4. Zhang Y, et al. (1997) Mol Endocrinol; 11(6): 823-32. |

**Pictures:**

**Figure 2.** Immunofluorescence staining of methanol-fixed HeLa cells using Progesterone Receptor Antibody (AP08044PU, Red).



**Figure 1.** Western blot analysis of extract from SKOV3 cell untreated or treated with insulin, using Progesterone Receptor antibody AP08043PU (Lane 1 and 2) and Progesterone Receptor (phospho-Ser190) antibody AP02372PU (Lane 3 and 4).

