

AP08044PU-N**Polyclonal Antibody to Progesterone receptor - Aff - Purified**

Alternate names:	NR3C3, Nuclear Receptor Subfamily 3 Group C Member 3, PGR, PR
Quantity:	0.1 mg
Concentration:	1 mg/ml
Uniprot ID:	P06401
NCBI:	NP_000917.3
GeneID:	5241
Host:	Rabbit
Immunogen:	The antiserum was produced against synthesized non-phosphopeptide derived from human Progesterone Receptor around the phosphorylation site of Serine 190 (G-L-SP-P-A).
Format:	State: Liquid purified Ig fraction. Purification: Immunoaffinity Chromatography. Buffer System: PBS (without Mg ²⁺ and Ca ²⁺), pH 7.4, 150 mM NaCl, 0.02% Sodium Azide and 50% Glycerol.
Applications:	Western Blot (1/500-1/1000). Immunofluorescence (1/100-1/200). Other applications not tested. Optimal dilutions are dependent on conditions and should be determined by the user.
Specificity:	Progesterone Receptor Antibody AP08044PU detects endogenous levels of total progesterone receptor protein. Species: Human. Other species not tested.
Storage:	Store the antibody (in aliquots) at -20°C. Avoid repeated freezing and thawing. Shelf life: One year from despatch.
General Readings:	1. Narayanan R, et al. (2005) Mol Cell Biol; 25(8): 2885-98. 2. Knotts TA, et al. (2001) J Biol Chem; 276(11): 8475-83. 3. Clemm DL, et al. (2000) Mol Endocrinol; 14(1): 52-65. 4. Zhang Y, et al. (1997) Mol Endocrinol; 11(6): 823-32.

Pictures:

Figure 2. Immunofluorescence staining of methanol-fixed HeLa cells using Progesterone Receptor Antibody (AP08044PU, Red).

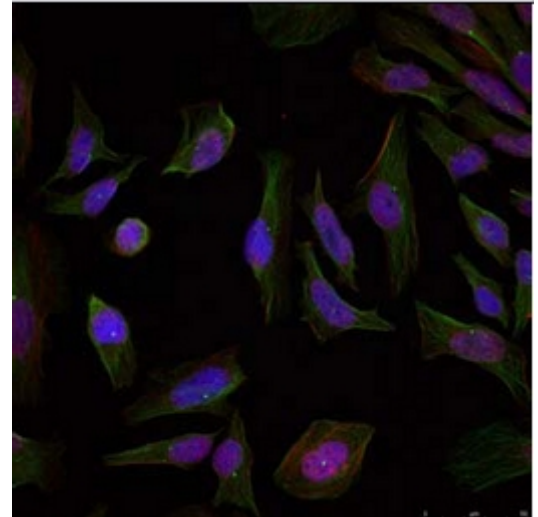


Figure 1. Western blot analysis of extract from SKOV3 cell untreated or treated with insulin, using Progesterone Receptor antibody AP08043PU (Lane 1 and 2) and Progesterone Receptor (phospho-Ser190) antibody AP02372PU (Lane 3 and 4).

