

## AP08038PU-N

## Polyclonal Antibody to ABL1 / ABL2 pTyr393/439 - Aff - Purified

### Alternate names:

ABL1, ABL2, Abelson Murine Leukemia Viral Oncogene Homolog 1 antibody, Bcr/c abl oncogene protein antibody, JTK7, Transformation gene oncogene ABL antibody, bcr/abl, c-ABL, p150

### Quantity:

0.1 mg

### Concentration:

1.0 mg/ml

### Background:

ABL1, an Abl type protein kinase, is associated with cell differentiation, cell division, cell adhesion and stress response. Kinase activity of nuclear ABL1 is mediated by retinoblastoma protein. Additionally, ABL1 has been shown to bind nuclear DNA, and this binding activity is regulated by CDC2-mediated phosphorylation. ABL1 (-/-) mice are osteoporotic and display increased perinatal mortality, reduced fertility, foreshortened crania and defects in the maturation of B cells in bone marrow. At least two mRNA isoforms have been reported, 6- or 7-kb, with alternatively spliced first exons joined to the common exons 2-11. Alterations of ABL1 by chromosomal rearrangement or viral transduction lead to malignant transformation. Further, a very long intron in the ABL1 gene is a target for translocations. Translocations of ABL1 to the breakpoint cluster region (BCR) on chromosome 22 lead to chronic myeloid leukemia and acute lymphocytic leukemia.

### Uniprot ID:

[P00519](#)

### NCBI:

[NP\\_005148.2](#)

### GeneID:

[25](#)

### Host:

Rabbit

### Immunogen:

Synthetic phosphopeptide derived from human ABL1/2 around the phosphorylation site of Tyrosine 393/439 (D-T-Yp-T-A).

### Format:

**State:** Liquid purified IgG fraction

**Purification:** Affinity Chromatography

**Buffer System:** PBS (without Mg<sup>2+</sup> and Ca<sup>2+</sup>), pH 7.4, 150mM NaCl, 0.02% Sodium Azide and 50% Glycerol.

### Applications:

**Immunofluorescence:** 1/100 - 1/200.

**Immunohistochemistry on Paraffin-Embedded Sections:** 1/50 - 1/100.

**Western Blot:** 1/500 - 1/1000; Incubate membrane with diluted antibody in 5% nonfat milk, 1X TBS, 0.1% Tween-20 at 4°C with gentle shaking, overnight.

Other applications not tested. Optimal dilutions are dependent on conditions and should be determined by the user.

### Specificity:

ABL1/ABL2 antibody detects endogenous levels of ABL1/2 only when phosphorylated at Tyrosine 393/439.

**Species:** Human and Mouse.

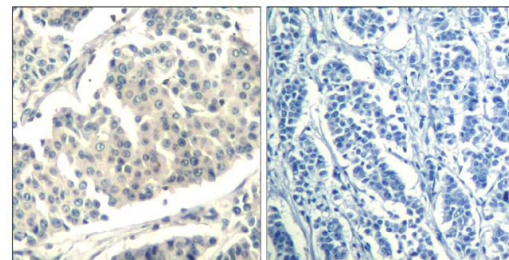
Other species not tested.

**Storage:** Store the antibody (in aliquots) at -20°C.  
Avoid repeated freezing and thawing.  
Shelf life: One year from despatch.

**General Readings:**

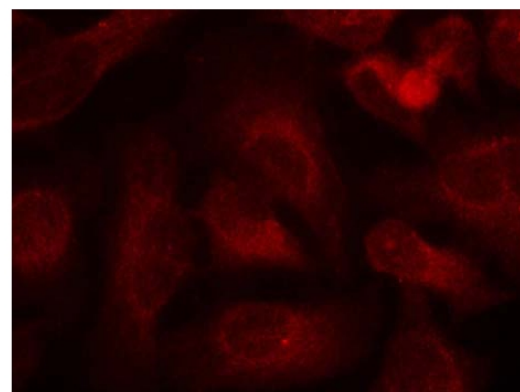
1. Wang, J.Y. et al. (2000) Oncogene 19, 5643-5650.
2. Danial, N.N. et al. (2000) Oncogene 19, 2523-2531.
3. Brasher, B.B. et al. (2000) J. Biol. Chem. 275, 35631-35637.
4. Pluk, H. et al. (2002) Cell 108, 247-259.

**Pictures:** **Figure 1.** Immunohistochemical analysis of paraffin-embedded human breast carcinoma tissue using using ABL1/2 antibody Phospho-Tyr393/429 (#AP08038PU).



P-Peptide - +

**Figure 2.** Immunofluorescence staining of methanol-fixed HeLa cells using ABL1/2 pTyr393/429 Antibody (#AP08038PU, Red).



Western Blot analysis of extracts from HL60 cells using ABL1/2 (pTyr393/429) antibody and the same antibody preincubated with blocking peptide

