

AP07871PU-N**Polyclonal Antibody to BACE2 (44-59) - Purified****Alternate names:**

AEPLC, ALP56, ASP1, ASP21, Aspartic-like protease 56 kDa, Aspartyl protease 1, Beta-secretase 2, Beta-site APP-cleaving enzyme 2, Beta-site APP-cleaving enzyme 2, Down region aspartic protease, Memapsin-1, Membrane-associated aspartic protease 1

Quantity:

50 µg

Concentration:

1 mg/ml

Background:

BACE2 (Memapsin 1) is a membrane-bound aspartic protease that is highly homologous with BACE1 (Memapsin 2). While BACE1 processes the amyloid precursor protein (APP) at a key step in generating the beta-amyloid peptide and presumably causes Alzheimer's disease (AD), BACE2 has not been demonstrated to be directly involved in APP processing, and its physiological functions remain to be determined. In vivo, BACE2 is expressed as a precursor protein containing pre-, pro-, protease, transmembrane, and cytosolic domains/peptides.

Uniprot ID:[Q9Y5Z0](#)**NCBI:**[NP_036237.2](#)**GenelD:**[25825](#)**Host:**

Rabbit

Immunogen:

Synthetic Peptide corresponding to Amino acids 44 to 59 of human BACE2 - KLH conjugated

Format:**State:** Liquid purified IgG fraction**Buffer System:** PBS containing 0.02% Sodium Azide as preservative**Applications:****Immunohistochemistry on Paraffin Sections:** 20 µg/ml.**Western Blot.**

Other applications not tested. Optimal dilutions are dependent on conditions and should be determined by the user.

Specificity:

This antibody recognises Beta-site APP-cleaving Enzyme 2 (BACE2).

Species Reactivity:**Tested:** Human.**Expected from sequence similarity:** Mouse and Rat.**Storage:**

Store the antibody undiluted at 2-8°C for one month or (in aliquots) at -20°C for longer.

Avoid repeated freezing and thawing.

Shelf life: one year from despatch.

Pictures:

Figure 2. Staining BACE2 in Lung by Immunohistochemistry using Formalin-Fixed Paraffin-Embedded (FFPE) tissue.

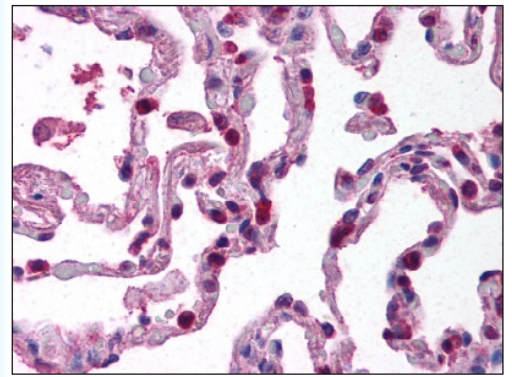


Figure 1. Staining BACE2 in Kidney by Immunohistochemistry using Formalin-Fixed Paraffin-Embedded (FFPE) tissue.

