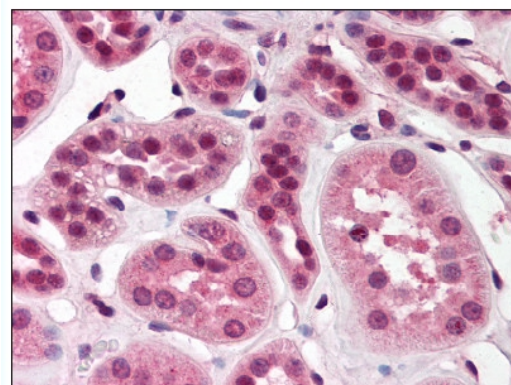


**AP07736PU-N****Polyclonal Antibody to SKI - Purified**

<b>Alternate names:</b>	Proto-oncogene c-Ski, Ski oncogene, ski oncoprotein, v-ski avian sarcoma viral oncogene homolog
<b>Quantity:</b>	50 µg
<b>Concentration:</b>	0.5 mg/ml
<b>Uniprot ID:</b>	<a href="#">P12755</a>
<b>NCBI:</b>	<a href="#">NP_003027.1</a>
<b>GeneID:</b>	<a href="#">6497</a>
<b>Host:</b>	Rabbit
<b>Immunogen:</b>	Synthetic Peptide corresponding to 14 amino acid peptide from near the amino terminus of human Ski.
<b>Format:</b>	<b>State:</b> Liquid purified IgG fraction. <b>Buffer System:</b> Phosphate Buffered Saline PBS containing 0.02% Sodium Azide as preservative.
<b>Applications:</b>	<b>Immunohistochemistry on Paraffin Sections:</b> 2.5 µg/ml. <b>Western Blot.</b> Other applications not tested. Optimal dilutions are dependent on conditions and should be determined by the user.
<b>Specificity:</b>	<b>Species:</b> Human. Other species not tested.
<b>Storage:</b>	Store the antibody undiluted at 2-8°C for one month or (in aliquots) at -20°C for longer. Dilute only prior to immediate use. Avoid repeated freezing and thawing. Shelf life: one year from despatch.
<b>Pictures:</b>	<b>Figure 2.</b> Formalin-Fixed Paraffin-Embedded (FFPE) on Kidney.



**Figure 1.** Formalin-Fixed Paraffin-Embedded (FFPE) on Pancreas.

