

AP07400PU-N**Polyclonal Antibody to Aurora kinase B (227-238) - Aff - Purified****Alternate names:**

AIK2, AIM1, ARK2, AURKB, Aurora- and Ipl1-like midbody-associated protein 1, Aurora-B, Aurora/IPL1-related kinase 2, STK-1, STK12, Serine/threonine-protein kinase 12

Quantity:

50 µg

Concentration:

1 mg/ml

Background:

Aurora Kinase B (also known as Aurora- and Ipl1-like midbody-associated protein 1, AIM-1, Aurora/IPL1-related kinase 2, Aurora-related kinase 2, STK-1, and Aurora-B) is a Ser/Thr protein kinase member of the Aurora subfamily that may be directly involved in regulating the cleavage of polar spindle microtubules and is a key regulator for the onset of cytokinesis during mitosis. Aurora Kinase B is localized to the midzone of central spindle in late anaphase and concentrated into the midbody in telophase and cytokinesis and is colocalized with gamma tubulin in the mid-body. High levels of Aurora B expression are seen in the thymus, although it is also expressed in the spleen, lung, testis, colon, placenta and fetal liver. Aurora B is expressed during S and G2/M phase and expression is up-regulated in cancer cells during M phase.

Uniprot ID:

[Q96GD4](#)

NCBI:

[NP_004208.2](#)

GenElD:

[9212](#)

Host:

Rabbit

Immunogen:

Synthetic peptide from human AURKB / Aurora-B.
Epitope: aa227-238

Format:

State: Liquid purified Ig
Purification: Immunoaffinity Chromatography
Buffer System: 0.02 M Potassium Phosphate, 0.15 M Sodium Chloride, pH 7.2 with 0.01% (w/v) Sodium Azide

Applications:

ELISA: 1/5000 - 1/20000.
Immunofluorescence.
Immunohistochemistry on Paraffin Sections: 5 µg/ml.
Western Blot: 1/500 - 1/2000.
Other applications not tested. Optimal dilutions are dependent on conditions and should be determined by the user.

Specificity:

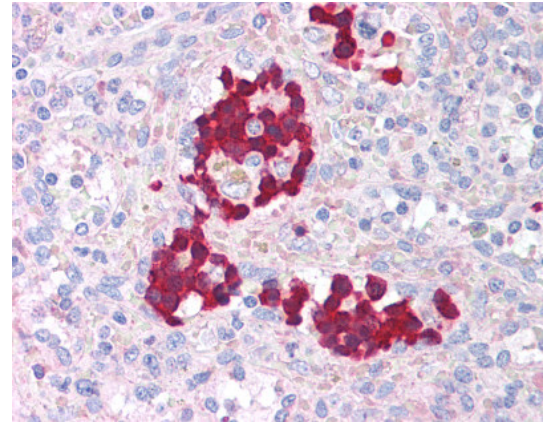
This antibody reacts to aa 227-238 of Aurora Kinase B protein.
Species: Human.
Other species not tested.

Storage:

Store undiluted at 2-8°C for one month or (in aliquots) at -20°C for longer.
Avoid repeated freezing and thawing.
Shelf life: one year from despatch.

Pictures:

Spleen: Formalin-Fixed Paraffin-Embedded (FFPE)



Spleen: Formalin-Fixed Paraffin-Embedded (FFPE)

