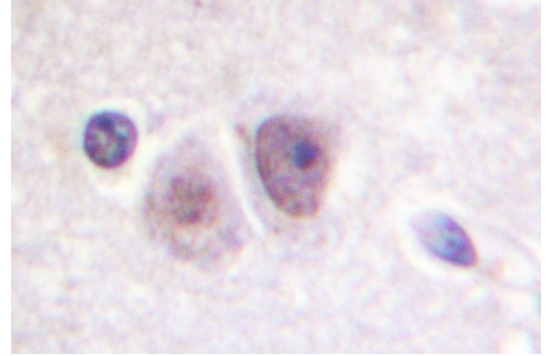


Polyclonal Antibody to p38 - Aff - Purified

Catalog No.:	AP06603PU-N
Quantity:	0.1 mg
Concentration:	1.0 mg/ml
Background:	<p>p38 is a 38 kDa Stress Activated Protein Kinase / Map Kinase (SAPK / MAPK) that is fully activated by dual phosphorylation on threonine 180 and tyrosine 182, within the activation loop. p38 MAPK plays a critical role in the initiation of G2 delay after ultraviolet radiation; gene knock out studies have also revealed a critical role for p38 in cardiac remodeling. Downstream targets of p38 include the transcription factors ELK1 and ATF2 and the kinases MAPKAPK2 and MAPKAPK5. p38 MAPK plays a role in the production of IL6 and is thought to stabilize erythropoietin production during hypoxic stress. It is activated by environmental stress, many proinflammatory cytokines and lipopolysaccharide. Dual phosphorylation by MAP2K3 and MAP2K6 is required for activation of p38 MAPK. It interacts with MAX, Cdc25B, Cdc25C and binds to the kinase interaction domain in the protein tyrosine phosphatase PTPRR; this interaction retains p38 MAPK in the cytoplasm.</p>
Host:	Rabbit
Immunogen:	Synthetic peptide, corresponding to amino acids 6-60 of Human p38.
Format:	<p>State: Liquid purified Ig fraction Purification: Affinity-chromatography using epitope-specific immunogen and the purity is > 95% (by SDS-PAGE) Buffer System: Phosphate buffered saline (PBS), pH 7.2. Preservatives: 0.05% sodium azide</p>
Applications:	<p>Western blot: 1/50-1/200. Immunohistochemistry on paraffin sections: 1/50-1/200. Other applications not tested. Optimal dilutions are dependent on conditions and should be determined by the user.</p>
Molecular Weight:	~ 42 kDa
Specificity:	This antibody detects endogenous levels of p38 protein. (region surrounding Val318)
Species Reactivity:	<p>Tested: Human. Expected from sequence similarity: Mouse and Rat.</p>
Storage:	Store undiluted at 2-8°C for one month or (in aliquots) at -20°C for longer. Avoid repeated freezing and thawing. Shelf life: one year from despatch.

Pictures:

Immunohistochemistry (IHC) analyzes of p38 antibody (Cat.-No.: AP06603PU-N) in paraffin-embedded human brain tissue.



Western blot (WB) analysis of p38 antibody (Cat.-No.: AP06603PU-N) in extracts from Jurkat cells.

