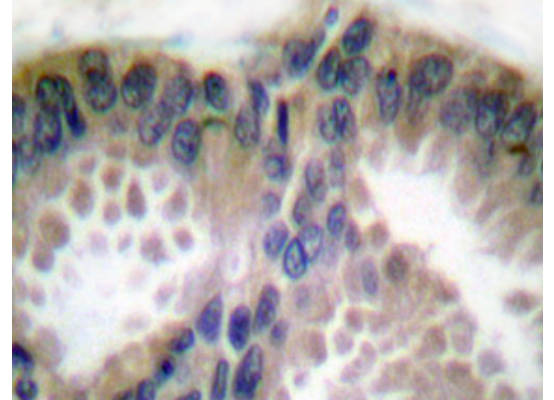


AP06103PU-N**Polyclonal Antibody to Collagen type XVIII alpha 1 chain - Aff - Purified**

| | |
|----------------------------|---|
| Alternate names: | COL18A1, Endostatin, KNO1 |
| Quantity: | 0.1 mg |
| Concentration: | 1.0 mg/ml |
| Background: | The extensive family of COL gene products (collagens) is composed of several chain types, including fibril-forming interstitial collagens (types I, II, III and V) and basement membrane collagens (type IV), each type containing multiple isoforms. Collagens are fibrous, extracellular matrix proteins with high tensile strength and are the major components of connective tissue, such as tendons and cartilage. All collagens contain a triple helix domain and frequently show lateral self-association in order to form complex connective tissues. Several collagens also play a role in cell adhesion, important for maintaining normal tissue architecture and function. |
| Uniprot ID: | P39060 |
| NCBI: | NP_085059 |
| GeneID: | 80781 |
| Host: | Rabbit |
| Immunogen: | Synthetic peptide, corresponding to amino acids 300-350 of Human COL18A1. |
| Format: | State: Liquid purified Ig fraction Purification: Affinity chromatography using epitope-specific immunogen (> 95% pure by SDS-PAGE) Buffer System: Phosphate buffered saline (PBS), pH 7.2. Preservatives: 0.05% Sodium azide |
| Applications: | Western blot: 1/500-1/1000. Immunohistochemistry on Paraffin Sections: 1/50-1/200. Other applications not tested. Optimal dilutions are dependent on conditions and should be determined by the user. |
| Molecular Weight: | ~ 179 kDa |
| Specificity: | This antibody detects endogenous levels of Collagen type XVIII alpha 1 chain (region surrounding Glu1322). |
| Species Reactivity: | Tested: Human. Expected from sequence similarity: Mouse and Rat. |
| Storage: | Store undiluted at 2-8°C for one month or (in aliquots) at -20°C for longer. Avoid repeated freezing and thawing. Shelf life: one year from despatch. |

Pictures:

Immunohistochemical (IHC) analysis in paraffin-embedded human lung carcinoma tissue using Collagen type XVIII alpha 1 chain antibody (Cat.-No. AP06103PU-N).



Western blot (WB) analysis of COL18A1 antibody (Cat.-No.: AP06103PU-N) at 1/500 dilution.
Lane 1: MCF-7 whole cell lysate.
Lane 2: PC12 whole cell lysate.

