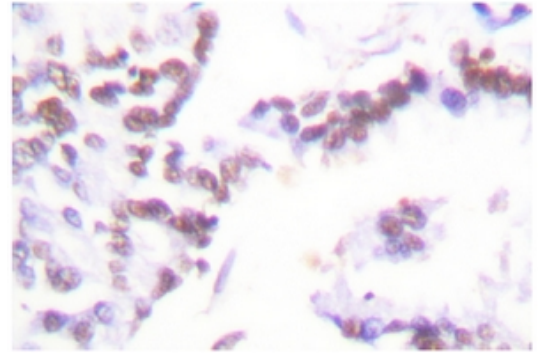


AP06084PU-N**Polyclonal Antibody to Cyclin G1 - Aff - Purified**

Alternate names:	CCNG, CCNG1, CYCG1, Cyclin-G, Cyclin-G1
Quantity:	0.1 mg
Concentration:	1.0 mg/ml
Background:	Cyclins are the regulatory subunits of Cdc2 p34 and related cyclin-dependent kinases (Cdks) which play critical roles in the control of cell cycle progression. The catalytic subunit for cyclin A and B is Cdc2 p34 kinase. The Cdc2- cyclin B complex controls the G2 to M transition whereas Cdc2-cyclin A regulates S phase progression. The G1 to S transition, however, appears to be controlled by the G1 cyclins. Cyclin D1 accumulates during G1 and associates with Cdk2, Cdk4 and Cdk5. Cyclin E and Cdk2 interact during the G1 to S transition. Cyclin G contains a typical N terminal cyclin box and a carboxy terminal domain sequence homologous to the tyrosine phosphorylation site of the epidermal growth factor receptor. Cyclin G expression is induced within 3 hours after growth stimulation and remains elevated with no apparent cell cycle dependency. Cyclin G2 shares 53% amino acid sequence identity with cyclin G1. Peak expression of cyclin G2 is seen in late S phase, as opposed to cyclin G1 expression, which is constitutive.
Uniprot ID:	P51959
NCBI:	NP_004051.1
GeneID:	900
Host:	Rabbit
Format:	State: Liquid purified Ig fraction (> 95% pure by SDS-PAGE) Purification: Affinity Chromatography using epitope-specific immunogen Buffer System: PBS, pH~7.2 Preservatives: 0.05% Sodium Azide
Applications:	Western blot: 1/500-1/1000. Immunohistochemistry on Paraffin Sections: 1/50-1/200. Other applications not tested. Optimal dilutions are dependent on conditions and should be determined by the user.
Molecular Weight:	~29 kDa
Specificity:	This antibody detects endogenous levels of Cyclin G protein. (region surrounding Ile194)
Species Reactivity:	Tested: Human. Expected from sequence similarity: Mouse and Rat.
Storage:	Store undiluted at 2-8°C for one month or (in aliquots) at -20°C for longer. Avoid repeated freezing and thawing. Shelf life: one year from despatch.

Pictures:

Immunohistochemistry analysis of Cyclin G Antibody (Cat.-No AP06084PU-N) in paraffin-embedded human lung carcinoma tissue.



Western blot (WB) analysis of Cyclin G antibody (Cat.-No.: AP06084PU-N) at 1/500 dilution
Lane1:DLD cell lysate
Lane2:Mouse liver tissue lysate
Lane3:Rat liver tissue lysate

