

AP06079PU-N**Polyclonal Antibody to Cyclin A2 - Aff - Purified****Alternate names:**

CCN1, CCNA, CCNA2, Cyclin A, Cyclin-A2

Quantity:

0.1 mg

Concentration:

1.0 mg/ml

Background:

The critical role that the family of regulatory proteins known as cyclins play in eukaryotic cell cycle regulation is well established. The best-characterized cyclin complex is the mitotic cyclin B/Cdc2 p34 kinase, the active component of maturing promoting factor. Cyclin A accumulates prior to cyclin B in the cell cycle, appears to be involved in control of S phase and has been shown to associate with cyclin-dependent kinase-2 (Cdk2). In addition, cyclin A has been implicated in cell transformation and is found in complexes with E1A, transcription factors DRTF1 and E2F and retinoblastoma protein, p110. A second form of cyclin A, named cyclin A1 because of its high sequence homology to Xenopus cyclin A1, is most highly expressed in germ cells. It has been proposed that cyclin A1 can associate with Cdk2, p39 and Cdc2 p34.

Uniprot ID:[P20248](#)**NCBI:**[NP_001228.1](#)**GeneID:**[890](#)**Host:**

Rabbit

Format:**State:** Liquid purified Ig fraction**Purification:** Affinity chromatography using epitope-specific immunogen (> 95% pure by SDS-PAGE).**Buffer System:** Phosphate buffered saline (PBS), pH 7.2.**Preservatives:** 0.05% Sodium azide**Applications:****Western blot:** 1/500-1/1000.**Immunohistochemistry on Paraffin sections:** 1/50-1/200.**Immunofluorescence:** 1/50-1/200.

Other applications not tested. Optimal dilutions are dependent on conditions and should be determined by the user.

Molecular Weight:

~52 kDa

Specificity:

This antibody detects endogenous levels of Cyclin A2 protein (region surrounding Trp250).

Species Reactivity:**Tested:** Human.**Expected from sequence similarity:** Mouse and Rat.**Storage:**

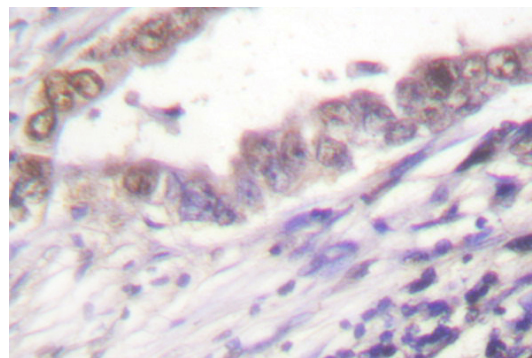
Store undiluted at 2-8°C for one month or (in aliquots) at -20°C for longer.

Avoid repeated freezing and thawing.

Shelf life: one year from despatch.

Pictures:

Immunohistochemical analysis in paraffin-embedded human lung carcinoma tissue using Cyclin A2 antibody (Cat.-No. AP06079PU-N).



Western blot (WB) analysis of Cyclin A antibody (Cat.-No.: AP06079PU-N) at 1/500 dilution
Lane1:HEK293T cell lysate
Lane2:NIH-3T3 cell lysate
Lane3:Rat brain tissue lysate

