

AP06065PU-N**Polyclonal Antibody to Claudin-4 / CLDN4 - Aff - Purified****Alternate names:**

CPE-R, CPE-Receptor, CPER, CPETR1, Clostridium perfringens enterotoxin receptor, WBSCR8, Williams-Beuren syndrome chromosomal region 8 protein

Quantity:

0.1 mg

Concentration:

1.0 mg/ml

Background:

The Claudin superfamily consists of many structurally related proteins in humans. These proteins are important structural and functional components of tight junctions in paracellular transport. Claudins are located in both epithelial and endothelial cells in all tight junction-bearing tissues. Three classes of proteins are known to localize to tight junctions, including the Claudins, Occludin and junction adhesion molecule (JAM). Claudins, which consist of four transmembrane domains and two extracellular loops, make up tight junction strands. Claudin expression is highly restricted to specific regions of different tissues and variations of Claudin expression may have an important role in transcellular transport through tight junctions. In rat liver, claudin-3 is uniformly expressed, whereas in the pancreas, claudin-3 is expressed in junctions of the duct epithelia and junctions of acinar cells. Claudin-3 binds the peptide toxin Clostridium perfringens enterotoxin (CPE) at the cell surface via the second extracellular loop of claudin-3. The gene encoding human claudin-3 maps to chromosome 7q11.23

Uniprot ID:

[Q14493](#)

NCBI:

[NP_001296.1](#)

GeneID:

[1364](#)

Host:

Rabbit

Immunogen:

Synthetic peptide, corresponding to amino acids 171-220 of Human Claudin-4.

Format:

State: Liquid purified Ig fraction (> 95% pure by SDS-PAGE)

Purification: Affinity Chromatography using epitope-specific immunogen

Buffer System: Phosphate buffered saline (PBS), pH 7.2.

Preservatives: 0.05% Sodium Azide

Applications:

Western blot: 1/500-1/1000.

Immunofluorescence: 1/50-1/200.

Immunohistochemistry on Paraffin Sections: 1/50-1/200.

Other applications not tested. Optimal dilutions are dependent on conditions and should be determined by the user.

Molecular Weight:

~22 kDa

Specificity:

This antibody detects endogenous levels of Claudin 4 protein.
(region surrounding Pro192)

Species Reactivity:

Tested: Human.

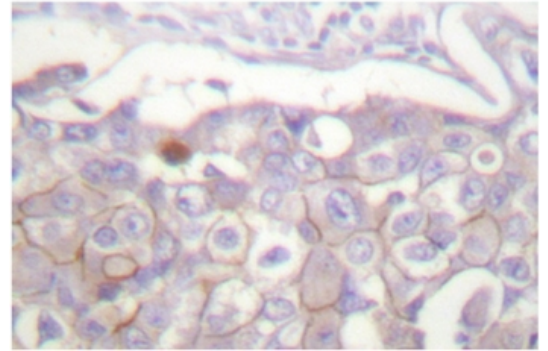
Expected from sequence similarity: Mouse and Rat.

Storage:

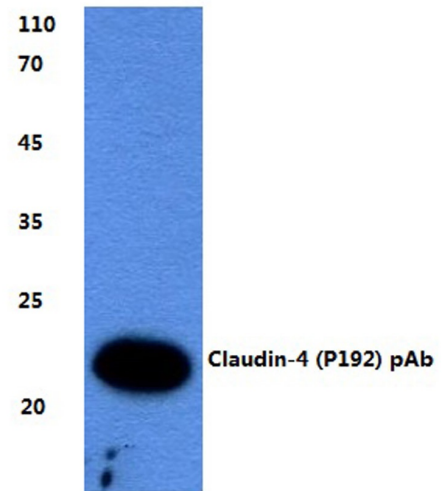
Store undiluted at 2-8°C for one month or (in aliquots) at -20°C for longer.
Avoid repeated freezing and thawing.
Shelf life: one year from despatch.

Pictures:

Immunohistochemistry analysis of Claudin 4 antibody (Cat.-No AP06065PU-N) in paraffin-embedded human breast carcinoma tissue.



Western blot (WB) analysis of Claudin 4 antibody (Cat.-No.: AP06065PU-N)



DLD whole cell lysate

Claudin-4 (P192) pAb at 1:500 dilution