

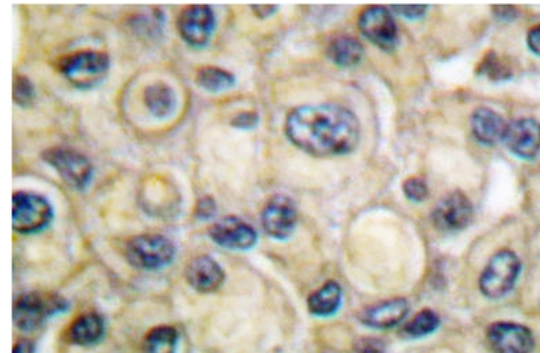
## AP06060PU-N

## Polyclonal Antibody to Claudin-1 / CLDN1 - Aff - Purified

<b>Alternate names:</b>	CLD1, PRO944, SEMP1, Senescence-associated epithelial membrane protein, UNQ481
<b>Quantity:</b>	0.1 mg
<b>Concentration:</b>	1.0 mg/ml
<b>Background:</b>	The claudin superfamily consists of many structurally related proteins in humans. These proteins are important structural and functional components of tight junctions in paracellular transport. Claudins are located in both epithelial and endothelial cells in all tight junction-bearing tissues. Three classes of proteins are known to localize to tight junctions, including the claudins, Occludin and junction adhesion molecule (JAM). Claudins, which consist of four transmembrane domains and two extracellular loops, make up tight junction strands. Emerging evidence suggests that the claudin family of proteins regulates transport through tight junctions via differential discrimination for solute size and charge. Claudin expression is often highly restricted to specific regions of different tissues and may have an important role in transcellular transport through tight junctions.
<b>Uniprot ID:</b>	<a href="#">O95832</a>
<b>NCBI:</b>	<a href="#">NP_066924.1</a>
<b>GeneID:</b>	<a href="#">9076</a>
<b>Host:</b>	Rabbit
<b>Immunogen:</b>	Synthetic peptide, corresponding to amino acids 171-220 of Human Claudin-1.
<b>Format:</b>	<b>State:</b> Liquid purified Ig fraction (> 95% pure by SDS-PAGE). <b>Purification:</b> Affinity Chromatography using epitope-specific immunogen. <b>Buffer System:</b> Phosphate buffered saline (PBS), pH~7.2 <b>Preservatives:</b> 0.05% Sodium Azide
<b>Applications:</b>	<b>Western blot:</b> 1/500-1/1000. <b>Immunohistochemistry on paraffin sections:</b> 1/50-1/200. <b>Immunofluorescence:</b> 1/50-1/200. Other applications not tested. Optimal dilutions are dependent on conditions and should be determined by the user.
<b>Molecular Weight:</b>	~22 kDa
<b>Specificity:</b>	This antibody detects endogenous levels of Claudin-1 protein. (region surrounding Arg197)
<b>Species Reactivity:</b>	<b>Tested:</b> Human. <b>Expected from sequence similarity:</b> Mouse and Rat.
<b>Storage:</b>	Store undiluted at 2-8°C for one month or (in aliquots) at -20°C for longer. Avoid repeated freezing and thawing. Shelf life: one year from despatch.

**Pictures:**

**Immunohistochemistry (IHC)** analyzes of Claudin-1 antibody (Cat.-No.: AP06060PU-N) in paraffin-embedded human breast carcinoma tissue.



**Western blot (WB)** analysis of Claudin-1 antibody (Cat.-No.: AP06060PU-N) at 1/500 dilution  
Lane1: Hela whole cell lysate  
Lane2: Mouse kidney tissue lysate  
Lane3: Rat kidney tissue lysate

