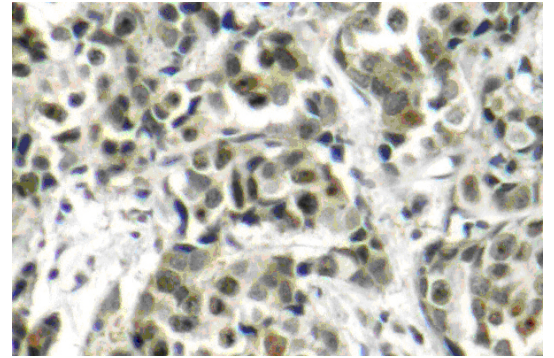


AP06033PU-N**Polyclonal Antibody to BRCA1 / RNF53 - Aff - Purified**

Alternate names:	Breast cancer type 1 susceptibility protein, RING finger protein 53
Quantity:	0.1 mg
Concentration:	1.0 mg/ml
Background:	BRCA1 (breast and ovarian cancer susceptibility protein 1) is a nuclear phosphoprotein that plays a role in maintaining genomic stability and acts as a tumor suppressor. It combines with other tumor suppressors, DNA damage sensors, and signal transducers to form a large multi-subunit protein complex known as BASC (for BRCA1 associated genome surveillance complex). BRCA1 associates with RNA polymerase II, and through the C terminal domain, also interacts with histone deacetylase complex. This protein thus plays a role in transcription, DNA repair of double-stranded breaks, and recombination. Mutations in the BRCA1 gene are responsible for approximately 40% of inherited breast cancers and more than 80% of inherited breast and ovarian cancers. Alternative splicing plays a role in modulating the subcellular localization and physiological function of this gene. Many alternatively spliced transcript variants have been described for this gene but only some have had their full length natures identified.
Uniprot ID:	P38398
NCBI:	NP_009225.1
GenID:	672
Host:	Rabbit
Immunogen:	Synthetic peptide, corresponding to amino acids 1500-1550 of Human BRCA1.
Format:	State: Liquid purified Ig fraction Purification: Affinity-chromatography using epitope-specific immunogen and the purity is > 95% (by SDS-PAGE) Buffer System: Phosphate buffered saline (PBS), pH 7.2. Preservatives: 0.05% sodium azide
Applications:	Immunohistochemistry on Paraffin sections: 1/50-1/200. Western blot: 1/500-1/1000. Other applications not tested. Optimal dilutions are dependent on conditions and should be determined by the user.
Molecular Weight:	~ 200 kDa
Specificity:	This antibody detects endogenous levels of BRCA1 protein (region surrounding Gln1518).
Species Reactivity:	Tested: Human. Expected from sequence similarity: Mouse and Rat.
Storage:	Store undiluted at 2-8°C for one month or (in aliquots) at -20°C for longer. Avoid repeated freezing and thawing. Shelf life: one year from despatch.

Pictures:

Immunohistochemical analysis of paraffin-embedded human breast carcinoma tissue using BRCA1 antibody (Cat.-No. AP06033PU-N).



Western blot (WB) analysis of BRCA1 antibody (Cat.-No.: AP06033PU-N) at 1/500 dilution
Lane1: Hela cell lysate
Lane2: Mouse kidney tissue lysate
Lane3: Rat brain tissue lysate

