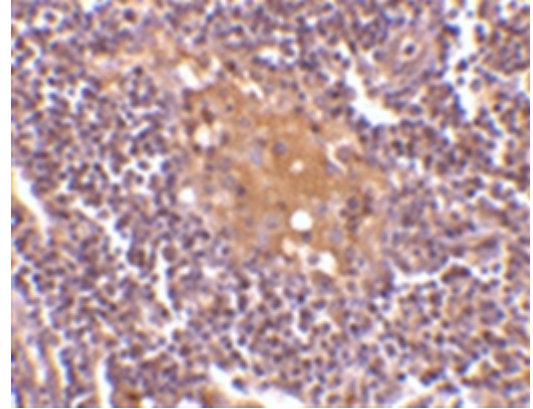


## Polyclonal Antibody to CD5L (C-term) - Purified

<b>Alternate names:</b>	SP-ALPHA
<b>Catalog No.:</b>	AP05583PU-S
<b>Quantity:</b>	50 µg
<b>Concentration:</b>	1.0mg/ml
<b>Background:</b>	CD5L is also known as Apoptosis Inhibitor expressed by Macrophages (AIM), and SP alpha. CD5L is a soluble 38kD glycoprotein which is specifically produced by mature macrophages, and has been shown to support their survival and enhance phagocytic function. CD5L expression is upregulated in response to LXR/RXR heterodimer activation. CD5L has been shown to mediate the survival of macrophages in atherosclerotic plaques.
<b>Host / Isotype:</b>	Rabbit / IgG
<b>Immunogen:</b>	13 amino acid peptide sequence near the carboxy terminus of human CD5L.
<b>Format:</b>	<b>State:</b> Liquid purified IgG <b>Buffer System:</b> Phosphate buffered saline containing 0.02% Sodium Azide
<b>Applications:</b>	Western blot: 0.5 - 1.0 µg/ml; detects a band of approximately 38kDa in Raji cell lysates. Immunohistochemistry on paraffin sections. Other applications not tested. Optimal dilutions are dependent on conditions and should be determined by the user.
<b>Specificity:</b>	This antibody detects an epitope within the C-terminal (CT) region of human CD5L. <b>Species:</b> Human, Mouse. Other species not tested.
<b>Storage:</b>	Store the antibody undiluted at 2-8°C for one month or (in aliquots) at -20°C for longer. Avoid repeated freezing and thawing. Shelf life: one year from despatch.
<b>Caution:</b>	(A full Health and Safety assessment is available upon request) This product contains Sodium Azide: a POISONOUS AND HAZARDOUS SUBSTANCE, which should be handled by trained staff only.
<b>General Readings:</b>	1. Sarrias MR, Roselló S, Sánchez-Barbero F, Sierra JM, Vila J, Yélamos J, et al. A role for human Sp alpha as a pattern recognition receptor. J Biol Chem. 2005 Oct 21;280(42):35391-8. Epub 2005 Jul 19. PubMed PMID: 16030018. 2. Arai S, Shelton JM, Chen M, Bradley MN, Castrillo A, Bookout AL, et al. A role for the apoptosis inhibitory factor AIM/Spalpha/Ap16 in atherosclerosis development. Cell Metab. 2005 Mar;1(3):201-13. PubMed PMID: 16054063.

**Pictures:**

Formalin fixed, paraffin embedded human lymph node stained with Rabbit anti Human CD5L (AP05583PU-N) following heat mediated antigen retrieval using sodium citrate buffer (pH6.0)



Western blot analysis of whole cell lysates from Raji human Burkitt's lymphoma cells probed with Rabbit anti Human CD5L, also known as AIM (AP05583PU-N) at 0.5(A), 1(B) and 2(C) µg/ml

