

**AP05287PU-N****Polyclonal Antibody to ROBO1 - Aff - Purified****Alternate names:**

DUTT1, Deleted in U Twenty Twenty, ROBO-1, Roundabout homolog 1

**Quantity:**

0.1 mg

**Concentration:**

Lot specific

**Background:**

Receptor for SLIT1 and SLIT2 which are thought to act as molecular guidance cue in cellular migration, including axonal navigation at the ventral midline of the neural tube and projection of axons to different regions during neuronal development. In axon growth cones, the silencing of the attractive effect of NTN1 by SLIT2 may require the formation of a ROBO1-DCC complex. May be required for lung development. Defects in ROBO1 may be a cause of breast and lung cancer. ROBO1 maps within a region of overlapping homozygous deletions characterized in both small cell lung cancer cell lines (SCLC) and in a breast cancer cell line.

**Uniprot ID:**[Q9Y6N7](#)**NCBI:**[NP\\_002932.1](#)**GeneID:**[6091](#)**Host:**

Rabbit

**Immunogen:**

Synthetic peptide derived from human ROBO1 protein

**Format:****State:** Liquid Ig fraction**Purification:** Affinity chromatography**Buffer System:** Phosphate buffered saline with 0.08% sodium azide**Applications:**

Western blot (1:400 starting dilution).

Other applications not tested. Optimal dilutions are dependent on conditions and should be determined by the user.

**Specificity:**

This antibody detects Roundabout homolog 1 / ROBO1, widely expressed, with exception of kidney.

**Species:** Human.

Other species not tested.

**Storage:**

Store the product (in aliquots) at -20 °C. Can be shipped at 2 - 8 °C.

Avoid repeated freezing and thawing.

Shelf life: One year from despatch.

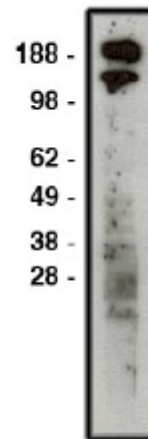
**General Readings:**

1. Brose K, Bland KS, Wang KH, Arnott D, Henzel W, Goodman CS, et al. Slit proteins bind Robo receptors and have an evolutionarily conserved role in repulsive axon guidance. *Cell*. 1999 Mar 19;96(6):795-806. PubMed PMID: 10102268.

2. Dallol A, Forgacs E, Martinez A, Sekido Y, Walker R, Kishida T, et al. Tumour specific promoter region methylation of the human homologue of the Drosophila Roundabout gene DUTT1 (ROBO1) in human cancers. *Oncogene*. 2002 May 2;21(19):3020-8. PubMed PMID: 12082532.

**Pictures:**

Western blot using ROBO1 antibody (AP05287PU-N) on HT-29 cell lysate. Lysate used at 30 µg/lane. Antibody used at 1:400 dilution. Secondary antibody, mouse anti-rabbit HRP, used at 1:50k dilution.



**Recommended Control Peptides:** AP05287CP-N