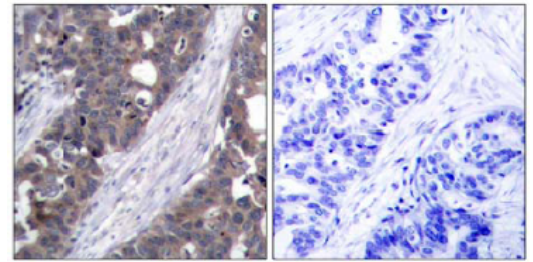


**AP02762PU-N****Polyclonal Antibody to RPS6KB1 / STK14A - Aff - Purified**

<b>Alternate names:</b>	70 kDa ribosomal protein S6 kinase 1, 70 kDa ribosomal protein S6 kinase 1, Ribosomal protein S6 kinase I, Ribosomal protein S6 kinase beta-1, S6K-beta-1, S6K1, Serine/threonine-protein kinase 14A, p70 S6 kinase alpha, p70 S6K-alpha, p70 S6KA, p70-S6K 1
<b>Quantity:</b>	0.1 mg
<b>Concentration:</b>	1.0 mg/ml
<b>Uniprot ID:</b>	<a href="#">P23443</a>
<b>NCBI:</b>	<a href="#">NP_003152.1</a>
<b>GeneID:</b>	<a href="#">6198</a>
<b>Host:</b>	Rabbit
<b>Immunogen:</b>	The antiserum was produced against synthesized phosphopeptide derived from human p70 S6 Kinase around the phosphorylation site of serine 411 (I-R-Sp-P-R).
<b>Format:</b>	<b>State:</b> Liquid purified Ig fraction <b>Purification:</b> Affinity chromatography <b>Buffer System:</b> PBS (without Mg <sup>2+</sup> and Ca <sup>2+</sup> ), pH 7.4, 150 mM NaCl, 0.02% Sodium Azide and 50% Glycerol.
<b>Applications:</b>	<b>Western blot:</b> 1/500 - 1/1000. <b>Immunofluorescence:</b> 1/100 - 1/200. <b>Immunohistochemistry on Paraffin-Embedded Sections:</b> 1/50 - 1/100. Other applications not tested. Optimal dilutions are dependent on conditions and should be determined by the user.
<b>Specificity:</b>	This antibody detects endogenous levels of total p70 S6 Kinase protein. <b>Species:</b> Human, Mouse and Rat. Other species not tested.
<b>Storage:</b>	Store the antibody (in aliquots) at -20°C. Avoid repeated freezing and thawing. Shelf life: One year from despatch.
<b>General Readings:</b>	1. Satoru Eguchi et al. (1999) J Biol Chem, Vol. 274: 36843-36851 2. Papst PJ, et al. (1998) J Biol Chem. 273(24):15077-84. 3. Ulrike Krause et al. (2002) Eur. J. Biochem. 269: 3751-3759 c 4. Le, X.F, et al. (2003) Oncogene 22: 484-97

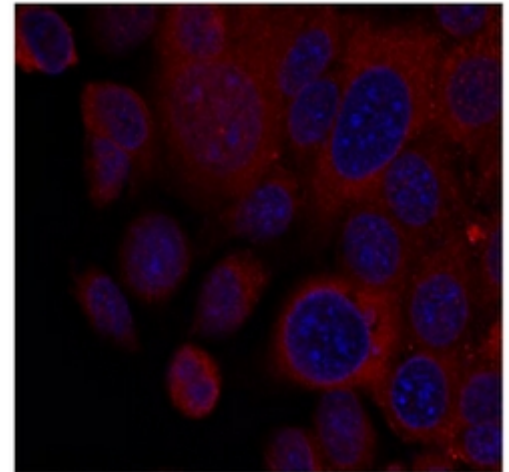
**Pictures:**

Immunohistochemical analysis of paraffin-embedded human breast carcinoma tissue using p70 S6 Kinase antibody.



Peptide - +

Immunofluorescence staining of methanol-fixed MCF7 cells using p70 S6 Kinase antibody (Red).



Western blot analysis of extracts from 293 cells using p70 S6 Kinase antibody

