

AP02741PU-N**Polyclonal Antibody to ERK1 / ERK2 - Aff - Purified****Alternate names:**

ERK-1/ERK-2, Extracellular signal regulated kinase 1/2, Insulin stimulated MAP2 kinase, MAPK1/MAPK2, Microtubule associated protein 2 kinase, Mitogen activated protein kinase 1/2/3, P42/P44-MAPK

Quantity:

0.1 mg

Concentration:

1.0 mg/ml

Background:

Both p44 and p42 MAP kinases (Erk1 and Erk2) function in a protein kinase cascade that plays a critical role in the regulation of cell growth and differentiation. Activation of MAP kinases occurs through phosphorylation of threonine and tyrosine (202 and 204 of human MAP kinase [Erk1] or 183 and 185 of rat Erk2) at the sequence T*EY* by a single upstream MAP kinase kinase (MEK). Both kinases are known to weakly autophosphorylate on tyrosine.

Host:

Rabbit

Immunogen:

Peptide sequence around aa. 200~204 (F-L-T-E-Y) derived from Human p44/42 MAP Kinase.

Format:

State: Liquid purified IgG fraction

Purification: The antibody was affinity-purified from rabbit antiserum by affinity-chromatography using epitope-specific immunogen.

Buffer System: PBS (without Mg²⁺ and Ca²⁺), pH 7.4 containing 150mM NaCl, 0.02% sodium azide and 50% glycerol.

Applications:

Western Blot: 1/500-1/1000.

Immunohistochemistry on Paraffin Sections: 1/50-1/100.

Other applications not tested. Optimal dilutions are dependent on conditions and should be determined by the user.

Specificity:

p44/42 MAP Kinase antibody detects endogenous levels of total p44/42 MAP Kinase protein.

Species: Human, Mouse, Rat.

Other species not tested.

Storage:

Upon receipt, store undiluted (in aliquots) at -20°C.

Avoid repeated freezing and thawing.

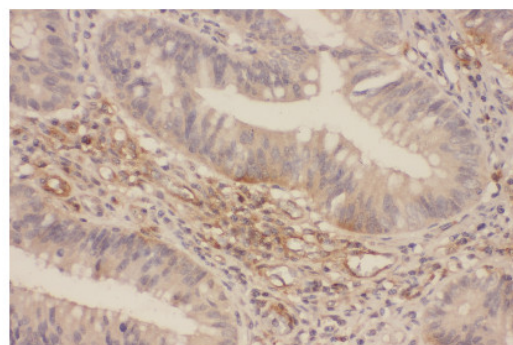
Shelf life: one year from despatch.

General Readings:

1. TETE HANNKEN, et al. (2000) Am Soc Nephrol 11:1387-1397
2. Omar D. PerezNature et al. (2002) Biotechnology 20: 155 - 162
3. Jingui Yu, et al. (2005) Anesth Analg 101: 315-321
4. Hironobu Ihn et al.(2000) Immunology 165: 2149-2155

Pictures:

Immunohistochemical analysis of paraffin-embedded human Colorectal tissue using p44/42 MAP Kinase Antibody Cat.-No AP02741PU



Western blot analysis of extracts from Hela and 293 cells using p44/42 MAP Kinase antibody Cat.-No AP02741PU

