

AP02666PU-S**Polyclonal Antibody to FOXO1A (254-258) - Aff - Purified****Alternate names:**

FKHR, FOXO1, Forkhead Box Protein O1, Forkhead Box Protein O1A, Forkhead in Rhabdomyosarcoma

Quantity:

50 µg

Concentration:

1.0 mg/ml

Background:

FOXO1A (FKHR or ForkHead in Rhabdomyosarcoma) is a 70 kDa protein which is a member of a subfamily of the forkhead homeotic gene family of transcription factors. Recent studies have shown that this protein can act as either a coactivator or a corepressor of nuclear receptor activity. This action is mediated through the LXXLL motif found in the C terminus of the FOXO1A protein. The specific function of the gene has not yet been determined; however, it may play a role in myogenic growth and differentiation. Chromosomal aberrations involving FOXO1A are a cause of rhabdomyosarcoma 2 (RMS2); also known as alveolar rhabdomyosarcoma.

Uniprot ID:[Q12778](#)**NCBI:**[NP_002006.2](#)**GenelD:**[2308](#)**Host:**

Rabbit

Immunogen:

Peptide Sequence around amino acids 254~258 (A-A-S-M-D) derived from Human FKHR/FOXO1A

Format:**State:** Liquid purified Ig fraction.**Purification:** Immunoaffinity Chromatography using epitope-specific immunogen.**Buffer System:** PBS (without Mg²⁺ and Ca²⁺), pH 7.4, 150 mM NaCl, 0.02% Sodium Azide and 50% Glycerol.**Applications:****Western blot:** 1/500-1/1000.

Incubate membrane with diluted antibody in 5% nonfat milk, 1x TBS, 0.1% Tween-20 at 4°C with gentle shaking, overnight.

Immunofluorescence: 1/100-1/200.**Immunohistochemistry on Paraffin sections:** 1/50-1/100.

Other applications not tested. Optimal dilutions are dependent on conditions and should be determined by the user.

Molecular Weight:

78-82 KDa

Specificity:

This antibody detects endogenous levels of total FKHR protein.

Species Reactivity:**Tested:** Human tissue and cell lines**Storage:**

Store the antibody (in aliquots) at -20°C.

Avoid repeated freezing and thawing.

Shelf life: One year from despatch.

General Readings:

1. Gan L, et al. (2005) J Neurochem; 93(5): 1209-19.

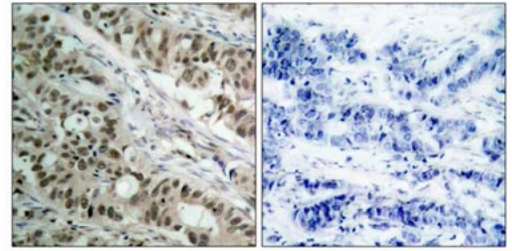
2. Smith WW, et al. (2005) J Cell Biol; 169(2): 331-9.

3. Di Maira G, et al. (2005) Cell Death Differ; 12(6): 668-77.

- 4. Horn S, et al. (2004) *Leukemia*; 18(11): 1839-49.
- 5. Zhao X, et al. (2004) *Biochem J* 4; 378(Pt 3): 839-49.

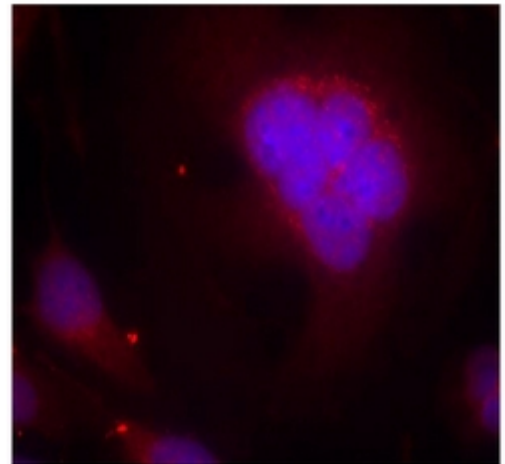
Pictures:

Immunohistochemical analysis of paraffin-embedded human breast carcinoma tissue using FKHR antibody AP02666PU.



Peptide - +

Immunofluorescence staining of methanol-fixed HeLa cells using FKHR antibody AP02666PU (Red).



Western Blot analysis of extracts from HeLa cells using FKHR antibody

