

**AP02649PU-S****Polyclonal Antibody to Tyrosine-protein kinase JAK1 - Aff - Purified****Alternate names:** JAK-1, JAK1A, JAK1B, Janus kinase 1**Quantity:** 50 µg**Concentration:** 1.0 mg/ml**Uniprot ID:** [P23458](#)**NCBI:** [NP\\_002218.2](#)**GeneID:** [3716](#)**Host:** Rabbit**Immunogen:** The antiserum was produced against synthesized non-phosphopeptide derived from human JAK1 around the phosphorylation site of tyrosine 1022 (K-E-Yp-Y-T).**Format:** **State:** Liquid purified Ig fraction.**Purification:** Immunoaffinity chromatography.**Buffer System:** PBS (without Mg<sup>2+</sup> and Ca<sup>2+</sup>), pH 7.4, 150 mM NaCl, 0.02% Sodium Azide and 50% Glycerol.**Applications:** Suitable for use in Western blot (1:500-1:1000) and Immunohistochemistry (1:50-1:100).

Other applications not tested. Optimal dilutions are dependent on conditions and should be determined by the user.

**Specificity:** The antibody was affinity-purified from rabbit antiserum by affinity-chromatography using epitope-specific immunogen.

JAK1 antibody detects endogenous levels of total JAK1 protein.

**Species:** Human, Mouse and Rat.

Other species not tested.

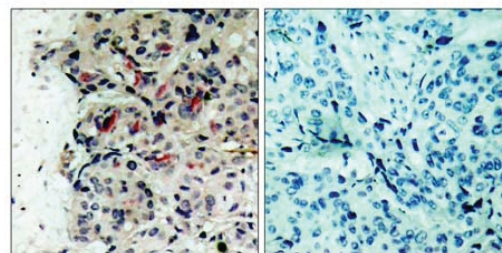
**Storage:** Store the antibody (in aliquots) at -20°C.

Avoid repeated freezing and thawing.

Shelf life: One year from despatch.

**General Readings:** 1. Zheng H, et al. (2005) Mol Cell Proteomics. 4(6):721-730.

2. Wang R, et al. (2003) Arch Biochem Biophys. 410(1): 7-15.

**Pictures:** **Figure 1.** Immunohistochemical analysis of paraffin-embedded human breast carcinoma tissue using JAK1 antibody AP02649PU.

Peptide

-

+

**Figure 2.** Western blot analysis of extracts from MCF7 cells using JAK1 antibody AP02649PU.

