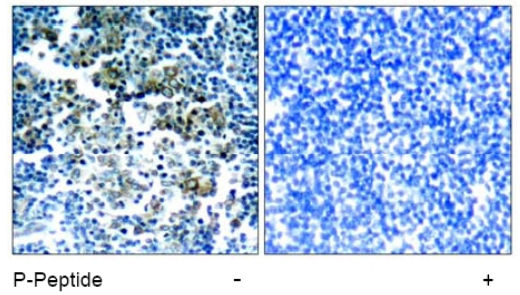


**AP02468PU-N****Polyclonal Antibody to BCR pTyr177 - Aff - Purified**

<b>Alternate names:</b>	BCR1, Breakpoint cluster region protein, D22S11, NY-REN-26, Renal carcinoma antigen NY-REN-26
<b>Quantity:</b>	0.1 mg
<b>Concentration:</b>	1.0 mg/ml
<b>Background:</b>	The breakpoint cluster region protein (Bcr) is best known to be involved in genomic translocation with fusion partner Abl (Cbr-Abl) causing chronic myelogenous leukemia (CML). This 160 kDa protein contains a serine/threonine kinase domain, an SH2 binding domain, a GTP/GDP exchange domain and a C-term domain which functions as a GTPase activating protein for p21rac and CDC42. Additionally, Bcr is involved in signal transduction and can down regulate Ras mediated cell signaling.
<b>Uniprot ID:</b>	<a href="#">P11274</a>
<b>NCBI:</b>	<a href="#">NP_004318.3</a>
<b>GeneID:</b>	<a href="#">613</a>
<b>Host:</b>	Rabbit
<b>Immunogen:</b>	The antiserum was produced against synthesized phosphopeptide derived from Human Bcr around the phosphorylation site of Tyrosine 177 (P-F-Y <sub>p</sub> -V-N).
<b>Format:</b>	<b>State:</b> Liquid purified Ig fraction. <b>Purification:</b> Affinity Chromatography using epitope-specific phosphopeptide. The antibody against non-phosphopeptide was removed by chromatography using non-phosphopeptide corresponding to the phosphorylation site. <b>Buffer System:</b> PBS (without Mg <sup>2+</sup> and Ca <sup>2+</sup> ), pH 7.4, 150 mM NaCl, 0.02% Sodium Azide and 50% Glycerol
<b>Applications:</b>	Suitable for use in Western blot (1/500-1/1000) and Immunohistochemistry on Paraffin-Embedded Sections (1/50-1/100). Other applications not tested. Optimal dilutions are dependent on conditions and should be determined by the user.
<b>Specificity:</b>	This antibody detects endogenous levels of Bcr only when phosphorylated at Tyrosine 177. <b>Species:</b> Human and Mouse. Other species not tested.
<b>Add. Information:</b>	Molecular Weight: 210 kDa
<b>Storage:</b>	Store the antibody (in aliquots) at -20°C. Avoid repeated freezing and thawing. Shelf life: One year from despatch.
<b>General Readings:</b>	1. Sattler M, et al. Mol Cell Biol. 1999 Nov; 19(11): 7473-7480. 2. Li S et al. EMBO J. 2001 Dec 3; 20(23): 6793-6804. 3. Million RP, et al. Mol Cell Biol. 2004 Jun; 24(11): 4685-4695. 4. Malcolm A. Meyn, et al. . Biol. Chem., Oct 2006; 281: 30907–30916.

**Pictures:**

**Figure 1.** Immunohistochemical analysis of paraffin-embedded human tonsil tumor tissue, using Bcr antibody (phospho-Tyr177) AP02468PU



**Figure 2.** Western blot analysis of extract from K562 cells, untreated or treated with H2O2 using Bcr antibody (phospho-Tyr177) AP02468PU

