

AP02457PU-S**Polyclonal Antibody to 14-3-3 protein zeta/delta pSer58 - Aff - Purified**

Alternate names:	KCIP-1, Protein kinase C inhibitor protein 1, YWHAZ
Quantity:	50 µg
Concentration:	1.0 mg/ml
Uniprot ID:	P63104
NCBI:	NP_001129171.1
GeneID:	7534
Host:	Rabbit
Immunogen:	Peptide Sequence around the phosphorylation site of Serine 58 (R-S- <i>Sp</i> -W-R) derived from Human 14-3-3 zeta.
Format:	State: Liquid purified IgG fraction. Purification: Immunoaffinity Chromatography using epitope-specific phosphopeptide. Buffer System: PBS (without Mg ²⁺ and Ca ²⁺), pH 7.4, 150 mM NaCl, 0.02% Sodium Azide and 50% Glycerol.
Applications:	Western blot: 1/500-1/1000. Note: Incubate membrane with diluted antibody in 5% nonfat milk, 1xTBS, 0.1% Tween-20 at 4°C with gentle shaking, overnight. Immunofluorescence: 1/100-1/200. Immunohistochemistry on Paraffin-Embedded Sections: 1/50-1/100. Other applications not tested. Optimal dilutions are dependent on conditions and should be determined by the user.
Specificity:	This antibody detects endogenous levels of 14-3-3 zeta only when phosphorylated at Serine 58. Species: Human, Mouse and Rat. Other species not tested.
Add. Information:	Molecular Weight: 28 kDa
Storage:	Store the antibody (in aliquots) at -20°C. Avoid repeated freezing and thawing. Shelf life: One year from despatch.
General Readings:	1. Gu YM, et al. (2006) FEBS Lett ; 580(1): 305-310. 2. Powell DW, et al. (2003) Mol Cell Biol; 23(15): 5376-5387. 3. Mackintosh C. (2004) Biochem J; 381(Pt 2): 329-342.

Pictures:

Figure 1. Immunohistochemical analysis of paraffin-embedded human breast carcinoma tissue, using 14-3-3 zeta (Phospho-Ser58) antibody AP02457PU.

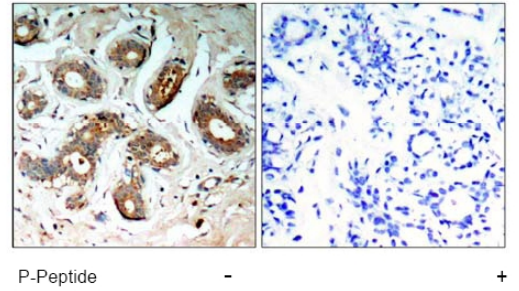


Figure 3. Immunofluorescence staining of methanol-fixed Hela cells using 14-3-3 zeta (Phospho-Ser58) antibody AP02457PU.

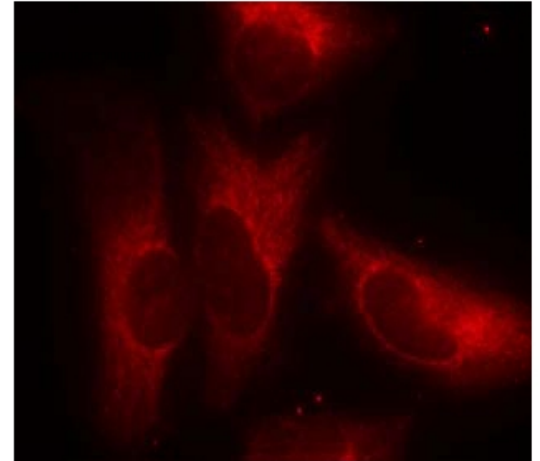


Figure 2. Western blot analysis of extract from NIH/3T3 cells, untreated or treated with TNF-alpha (20 ng/ml, 5min), using 14-3-3 zeta antibody (lane 1 and 2) and 14-3-3 zeta (Phospho-Ser58) antibody AP02457PU (lane 3 and 4).

