

**AP02423PU-N****Polyclonal Antibody to FOXO1A pSer319 - Aff - Purified**

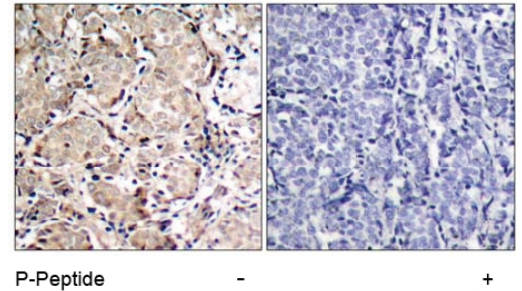
<b>Alternate names:</b>	FKHR, FOXO1, Forkhead Box Protein O1, Forkhead Box Protein O1A, Forkhead in Rhabdomyosarcoma
<b>Quantity:</b>	0.1 mg
<b>Concentration:</b>	1.0 mg/ml
<b>Background:</b>	FOXO1A (FKHR or ForkHead in Rhabdomyosarcoma) is a 70 kDa protein which is a member of a subfamily of the forkhead homeotic gene family of transcription factors. Recent studies have shown that this protein can act as either a coactivator or a corepressor of nuclear receptor activity. This action is mediated through the LXXLL motif found in the C terminus of the FOXO1A protein. The specific function of the gene has not yet been determined; however, it may play a role in myogenic growth and differentiation. Chromosomal aberrations involving FOXO1A are a cause of rhabdomyosarcoma 2 (RMS2); also known as alveolar rhabdomyosarcoma.
<b>Uniprot ID:</b>	<a href="#">Q12778</a>
<b>NCBI:</b>	<a href="#">NP_002006.2</a>
<b>GenelD:</b>	<a href="#">2308</a>
<b>Host:</b>	Rabbit
<b>Immunogen:</b>	The antiserum was produced against synthesized phosphopeptide derived from human FKHR around the phosphorylation site of Serine 319 (T-S-SP-N-A).
<b>Format:</b>	<b>State:</b> Liquid purified Ig fraction. <b>Purification:</b> Affinity Cchromatography using epitope-specific phosphopeptide. The antibody against non-phosphopeptide was removed by chromatography using non-phosphopeptide corresponding to the phosphorylation site. <b>Buffer System:</b> PBS (without Mg <sup>2+</sup> and Ca <sup>2+</sup> ), pH 7.4, 150 mM NaCl, 0.02% Sodium Azide and 50% Glycerol.
<b>Applications:</b>	Western Blot: 1/500-1/1000. Immunofluorescence: 1/100-1/200. Immunohistochemistry on Paraffin Sections: 1/50-1/100. Other applications not tested. Optimal dilutions are dependent on conditions and should be determined by the user.
<b>Specificity:</b>	This antibody detects endogenous levels of FKHR only when phosphorylated at Serine 319. <b>Species:</b> Human, Rat and Mouse. Other species not tested.
<b>Add. Information:</b>	<b>All Sites:</b> Human: Ser319 Mouse: Ser316 Rat: Ser313

**Storage:** Store the antibody (in aliquots) at -20°C. Avoid repeated freezing and thawing. Shelf life: One year from despatch.

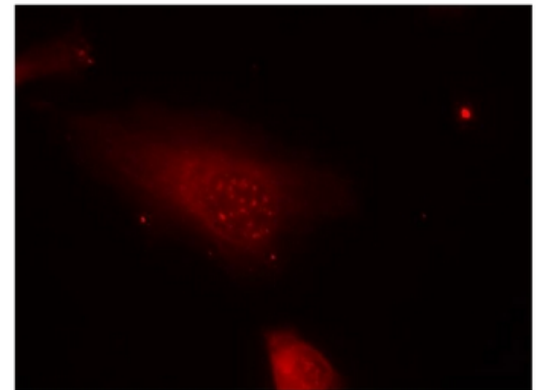
**General Readings:**

1. Rena G, et al. (2002) EMBO J 21(9): 2263-2271.
2. Woods YL, et al. (2001) Biochem J355(Pt 3): 597-607.
3. Rena G, et al. (2001) Biochem J 354(Pt 3): 605-612.

**Pictures:** **Figure 1.** Immunohistochemical analysis of paraffin-embedded human breast carcinoma tissue using FKHR (phospho-Ser319) antibody (#AP02423PU).



**Figure 3.** Immunofluorescence staining of methanol-fixed HeLa cells using FKHR (phospho-Ser319) antibody (#AP02423PU, Red).



**Figure 2.** Western blot analysis of extracts from 293 cells (10% serum-treated, 15 min) and HeLa cells (EGF-treated, 200 ng/ml, 15 min), using FKHR antibody (#AP02682PU, Lane 1, 2 and 3) and FKHR (phospho-Ser319) antibody (#AP02423PU, Lane 4 and 5).

