

Polyclonal Antibody to PKC-pan pThr497 - Aff - Purified

Catalog No.: AP01857PU-N

Quantity: 0.1 mg

Concentration: 1.0 mg/ml

Background: Protein Kinase C (PKC) isoforms are serine/threonine kinases involved in signal transduction pathways that govern a wide range of physiological processes including differentiation, proliferation, gene expression, brain function, membrane transport and the organization of cytoskeletal and extracellular matrix proteins. Increasing evidence from studies using in vitro and in vivo systems points to PKC as a key regulator of critical cell cycle transitions, including cell cycle entry and exit and the G1 and G2 checkpoints. PKC-mediated control of these transitions can be negative or positive, depending on the timing of PKC activation during the cell cycle and on the specific PKC isozymes involved. There have been at least 12 different PKC isoforms identified in humans to date, including alpha, beta I, beta II, gamma, delta, epsilon, zeta, eta, theta, iota, lambda, and mu.

Host: Rabbit

Format: **State:** Liquid purified Ig fraction (> 95% pure by SDS-PAGE).
Purification: Affinity Chromatography using epitope-specific immunogen.
Buffer System: Phosphate buffered saline (PBS), pH~7.2
Preservatives: 0.05% Sodium Azide

Applications: **Western blot:** 1/500-1/1000.
Immunohistochemistry on paraffin sections: 1/50-1/200.
Other applications not tested. Optimal dilutions are dependent on conditions and should be determined by the user.

Molecular Weight: ~75 to 88 kDa

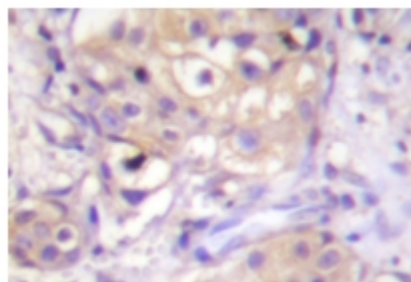
Specificity: This antibody detects endogenous levels of PKC PKC α , β I, β II, γ , δ , ϵ , η , ζ and θ isoforms only when phosphorylated at a residue homologous to threonine 497 of human PKC α .

Species Reactivity: **Tested:** Human.
Expected from sequence similarity: Mouse and Rat.

Storage: Store the antibody undiluted at 2-8°C for one month or (in aliquots) at -20°C for longer. Avoid repeated freezing and thawing.
Shelf life: One year from despatch.

Pictures:

Immunohistochemistry (IHC) analyzes of PKC-pan antibody (Cat.-No.: AP01857PU-N) in paraffin-embedded human breast carcinoma tissue.



Western blot (WB) analysis of PKC-pan antibody (Cat.-No.: AP01857PU-N) in extracts from NIH/3T3 cells treated with PMA 250ng/ml 15'.

