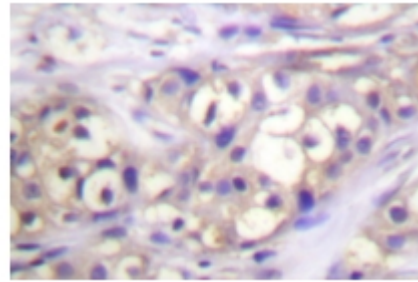


Polyclonal Antibody to PKC alpha/beta 2 pThr638 - Aff - Purified

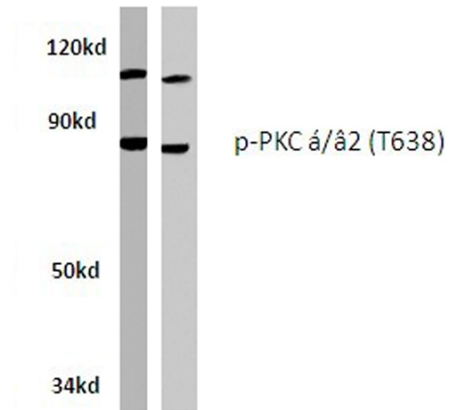
Alternate names:	Protein Kinase C alpha/beta 2
Catalog No.:	AP01855PU-N
Quantity:	0.1 mg
Concentration:	1.0 mg/ml
Background:	Members of the protein kinase C (PKC) family play a key regulatory role in a variety of cellular functions including cell growth and differentiation, gene expression, hormone secretion and membrane function. PKCs were originally identified as serine/threonine protein kinases whose activity was dependent on calcium and phospholipids. Diacylglycerols (DAG) and tumor promoting phorbol esters bind to and activate PKC. PKCs can be subdivided into at least two major classes including conventional (c) PKC isoforms (α , β I, β II and γ) and novel (n) PKC isoforms (δ , ϵ , ζ , η and θ). Patterns of expression for each PKC isoform differ among tissues and PKC family members exhibit clear differences in their cofactor dependencies. For instance, the kinase activities of nPKC δ and ϵ are independent of Ca^{2+} . On the other hand, nPKC δ and ϵ , as well as all of the cPKC members, possess phorbol ester-binding activities and kinase activities.
Host:	Rabbit
Format:	State: Liquid purified Ig fraction (> 95% pure by SDS-PAGE). Purification: Affinity Chromatography using epitope-specific immunogen. Buffer System: Phosphate buffered saline (PBS), pH~7.2 Preservatives: 15 mM Sodium Azide
Applications:	Western blot: 1/500-1/1000. Immunohistochemistry on paraffin sections: 1/50-1/200. Other applications not tested. Optimal dilutions are dependent on conditions and should be determined by the user.
Molecular Weight:	~ 80 kDa
Specificity:	This antibody detects endogenous levels of PKC α / β 2 pThr638 protein. (region surrounding Thr638)
Species Reactivity:	Tested: Human. Expected from sequence similarity: Mouse and Rat.
Storage:	Store undiluted at 2-8°C for one month or (in aliquots) at -20°C for longer. Avoid repeated freezing and thawing. Shelf life: One year from despatch.

Pictures:

Immunohistochemistry (IHC) analysis of PKC α / β 2 antibody (Cat.-No.: AP01855PU-N) in paraffin-embedded human breast carcinoma tissue.



Western blot (WB) analysis of p-PKC α / β 2 antibody (Cat.-No.: AP01855PU-N) in extracts from raw264.7 and hela cells.



Lane 1: Raw264.7 whole cell lysate
Lane 2: HeLa whole cell lysate
p-PKC α / β 2 (T638) pAb at 1:500 dilution