

AP01532PU-N**Polyclonal Antibody to ATF2 pThr73/55 - Aff - Purified****Alternate names:**

ATF-2, Activating transcription factor 2, CRE-BP1, CREB-2, CREB2, CREBP1, Cyclic AMP-dependent transcription factor ATF-2, Cyclic AMP-responsive element-binding protein 2, HB16, cAMP response element-binding protein CRE-BP1, cAMP-dependent transcription factor ATF-2

Quantity:

0.1 mg

Concentration:

1.0 mg/ml

Background:

Eukaryotic gene transcription is regulated by sequence-specific transcription factors which bind modular CIS acting promotor and enhancer elements. The cAMP response element (CRE), one of the best studied of such elements, consists of the palindromic octanucleotide TGACGTCA. Several CRE binding proteins have been identified within the ATF/CREB family, the best characterized of which include CREB-1, CREB-2 (also designated ATF-4), ATF-1, ATF-2 and ATF-3. These proteins share highly related COOH terminal leucine zipper dimerization and basic DNA binding domains but are highly divergent in their amino terminal domains. Although each of the ATF/CREB proteins appear capable of binding CRE in its homodimeric form, certain of these also bind as heterodimers, both within the ATF/CREB family and even with members of the AP-1 transcription factor family.

Uniprot ID:[P15336](#)**NCBI:**[NP_001871.2](#)**GenID:**[1386](#)**Host:**

Rabbit

Format:**State:** Liquid purified Ig fraction (> 95% pure by SDS-PAGE)**Purification:** Affinity chromatography**Buffer System:** Phosphate buffered saline (PBS) with 0.05% sodium azide, approx. pH 7.2.**Applications:****Western Blot:** 1/500-1/1000.**Immunohistochemistry on paraffin sections:** 1/50-1/200.**Immunoprecipitation:** 1/50-1/200.

Other applications not tested. Optimal dilutions are dependent on conditions and should be determined by the user.

Specificity:

p-ATF2 (pThr73/55) antibody detects endogenous levels of p-ATF2 protein.

Species: Human, Mouse, Rat.

Other species not tested.

Storage:

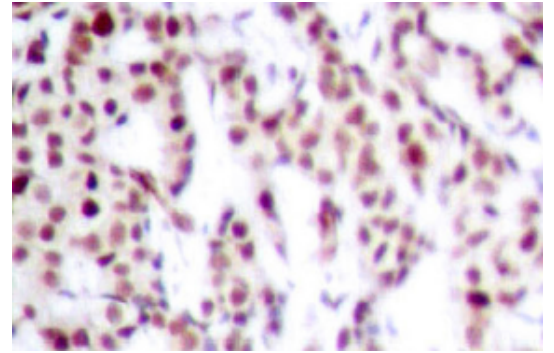
Store the antibody undiluted at 2-8°C for one month or (in aliquots) at -20°C for longer.

Avoid repeated freezing and thawing.

Shelf life: one year from despatch.

Pictures:

Immunohistochemistry (IHC) analyzes of p-ATF2 (pThr73/55) antibody (Cat.-No.: AP01532PU-N) in paraffin-embedded human breast carcinoma tissue.



Western blot (WB) analysis of p-ATF2 (pThr73/55) antibody (Cat.-No.: AP01532PU-N) in extracts from 293 cells treated with UV 15'.

