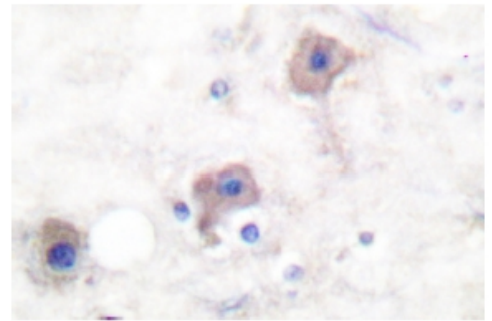


**AP01510PU-N****Polyclonal Antibody to mGluR2/3 - Aff - Purified**

<b>Alternate names:</b>	GRM2, GRM3, Metabotropic glutamate receptor 2, Metabotropic glutamate receptor 2/3, Metabotropic glutamate receptor 3, mGlu-2, mGlu-3
<b>Quantity:</b>	0.1 mg
<b>Concentration:</b>	1.0 mg/ml
<b>Background:</b>	The mGluR proteins (metabotropic glutamate receptors) are members of the G-protein-coupled receptor family and are functionally and pharmacologically distinct from the GluR proteins (ionotropic glutamate receptors). The eight currently known mGluR proteins are mediated by two G proteins with opposing regulation of adenylate cyclase pathways. The activities of mGluR-1 and mGluR-5 are mediated by a G protein that activates a phosphatidyl-inositolcalcium second messenger system and generates a calcium-activated chloride current. The remainder of the eight subtypes of mGluR have an activity mediated by a G protein that inhibits adenylate cyclase activity. mGluR-2, which may interact with GRASP, acts as a receptor for glutamate. It may also be involved in the regulation of neurotransmission suppression and in synaptogenesis or synaptic stablization. mGluR-3, which may interact with GRASP, acts as a receptor for glutamate.
<b>Host:</b>	Rabbit
<b>Format:</b>	<b>State:</b> Liquid purified IgG fraction (> 95% pure by SDS-PAGE). <b>Purification:</b> Affinity Chromatography using epitope-specific immunogen. <b>Buffer System:</b> PBS, pH 7.2 containing 15 mM Sodium Azide as preservative.
<b>Applications:</b>	ELISA (1/1000~1/5000). Western Blot (1/500~1/1000) Immunohistochemistry (1/50~1/200). Other applications not tested. Optimal dilutions are dependent on conditions and should be determined by the user.
<b>Specificity:</b>	This antibody detects endogenous levels of mGluR2/3 protein. <b>Species:</b> Human, Mouse and Rat. Other species not tested.
<b>Storage:</b>	Store the antibody undiluted at 2-8°C for one month or (in aliquots) at -20°C for longer. Avoid repeated freezing and thawing. Shelf life: one year from despatch.

**Pictures:**

Immunohistochemistry (IHC) analyzes of mGluR2/3 antibody in paraffin-embedded human brain tissue.



Western blot (WB) analysis of mGluR2/3 antibody in extracts from mouse brain cells.

