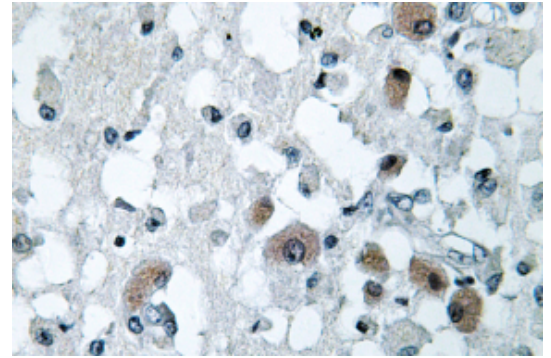


AP01401PU-N**Polyclonal Antibody to KDEL Receptor 3 / KDELR3 - Aff - Purified**

Alternate names:	ER lumen protein retaining receptor 3, KDEL endoplasmic reticulum protein retention receptor 3
Quantity:	0.1 mg
Concentration:	1.0 mg/ml
Background:	Soluble proteins in the endoplasmic reticulum (ER) contain a specific carboxy terminal sequence KDEL (Lys-Asp-Glu-Leu), and include the coat proteins required for vesicle budding from the ER, proteins that form retrograde vesicles on post-ER compartments, and integral membrane proteins that target vesicles to their correct destination. The retention of these soluble proteins in the ER depends on the interaction of the KDEL sequence with the corresponding KDEL receptor, also designated ERD2, in the Golgi apparatus. When KDEL proteins reach the Golgi complex, they are recognized by the KDEL receptor and transported retrograde in COPI-coated vesicles back to the ER. The small GTPase ADP-ribosylation factor 1 (ARF1), a regulator of vesicle transport, interacts with the KDEL receptor.
Uniprot ID:	O43731
NCBI:	NP_006846
GenelD:	11015
Host:	Rabbit
Format:	State: Liquid purified Ig fraction Purification: Affinity chromatography Buffer System: Phosphate buffered saline (PBS) with 0.05% sodium azide, approx. pH 7.2.
Applications:	Western Blot: 1/500-1/1000. Immunohistochemistry on paraffin sections: 1/50-1/200. Other applications not tested. Optimal dilutions are dependent on conditions and should be determined by the user.
Molecular Weight:	~ 28 kDa
Specificity:	KDEL Receptor 3 antibody detects endogenous levels of KDEL Receptor 3 protein. (region surrounding Leu95) Species: Human, Mouse. Other species not tested.
Storage:	Store the antibody undiluted at 2-8°C for one month or (in aliquots) at -20°C for longer. Avoid repeated freezing and thawing. Shelf life: one year from despatch.

Pictures:

Immunohistochemistry (IHC) analyzes of KDEL Receptor 3 antibody (Cat.-No.: AP01401PU-N) in paraffin-embedded human brain tissue.



Western blot (WB) analysis of KDEL Receptor 3 antibody (Cat.-No.: AP01401PU-N) in extracts from 3T3 cells.

