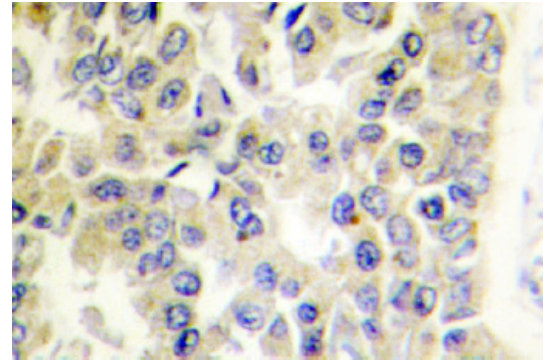


**AP01363PU-N****Polyclonal Antibody to MARK1/2/3/4 - Aff - Purified**

<b>Alternate names:</b>	MAP/Microtubule Affinity-Regulating Kinase, MARK
<b>Quantity:</b>	0.1 mg
<b>Concentration:</b>	1.0 mg/ml
<b>Background:</b>	<p>MARK1 (MAP/microtubule affinity-regulating kinase 1) belongs to the MARK family of serine/threonine kinases. MARK family protein kinases phosphorylate microtubule-associated proteins and may play a role in cytoskeletal stability. MARK2 refers to MAP/microtubule affinity-regulating kinase 2 isoform a [Homo sapiens]. EMK (ELKL Motif Kinase) is a small family of ser/thr protein kinases involved in the control of cell polarity, microtubule stability and cancer. Several cDNA clones have been isolated that encoded two isoforms of the human ser/thr protein kinase EMK1 called MARK2. MARK3 was originally identified as a marker that was induced by treatment with DNA damaging agents, and loss of MARK3 was found with carcinogenesis in the pancreas. MARK4 contains an N terminal serine/threonine kinase domain, a central ubiquitin associated domain, and a C terminal KA1 associated kinase domain. RT PCR analysis detects upregulated expression of the gene for MARK4 in nearly all clinical hepatocellular carcinoma cells.</p>
<b>Host:</b>	Rabbit
<b>Format:</b>	<p><b>State:</b> Liquid purified Ig fraction <b>Purification:</b> Affinity Chromatography using epitope-specific immunogen <b>Buffer System:</b> Phosphate buffered saline (PBS), pH~7.2 <b>Preservatives:</b> 15 mM Sodium Azide</p>
<b>Applications:</b>	<p><b>Western Blot:</b> 1/500-1/1000. <b>Immunofluorescence:</b> 1/50-1/200. <b>Immunohistochemistry on Paraffin Sections:</b> 1/50-1/200. Other applications not tested. Optimal dilutions are dependent on conditions and should be determined by the user.</p>
<b>Molecular Weight:</b>	~92 kDa
<b>Specificity:</b>	<p>This antibody detects endogenous levels of MARK1/2/3/4 protein. <b>Species:</b> Human, Mouse, Rat. Other species not tested.</p>
<b>Storage:</b>	<p>Store undiluted at 2-8°C for one month or (in aliquots) at -20°C for longer. Avoid repeated freezing and thawing. Shelf life: one year from despatch.</p>

**Pictures:**

Immunohistochemistry analysis of MARK1/2/3/4 antibody Cat.-No AP01363PU-N in paraffin-embedded human breast carcinoma tissue.



Western blot analysis of MARK1/2/3/4 antibody Cat.-No AP01363PU-N in extracts from A549 cells.

