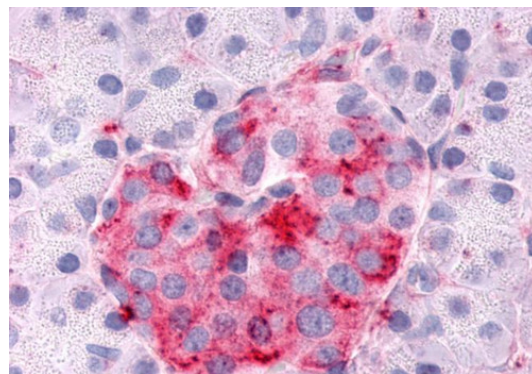


AP01037PU-N**Polyclonal Antibody to Serum/glucocorticoid-regulated kinase 3 (SGK3) (N-term) - Aff - Purified**

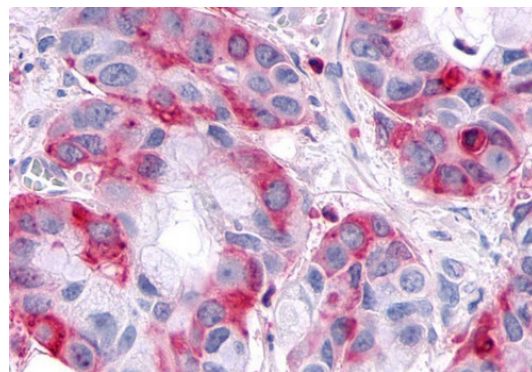
Alternate names:	EC=2.7.11.1, SGK2, SGK3, SGK1, Serine/threonine-protein kinase Sgk3, Serum/glucocorticoid-regulated kinase 3, Serum/glucocorticoid-regulated kinase-like
Quantity:	50 µg
Concentration:	1.0 mg/ml
Background:	SGKL/SGK3, also known as CISK for cytokine-independent survival kinase, is a SGK type protein kinase. The protein contains a lipid-binding phospho homology (PX) domain, which is required for targeting SGKL/SGK3 protein to the endosomal compartment. SGKL/SGK3 functions downstream of the phosphoinositide 3-kinase (PI3K) cascade and has been implicated in cell survival.
Host:	Rabbit
Immunogen:	SGK3 antibody was raised against synthetic 20 amino acid peptide from N-terminus of human SGK3. Percent identity with other species by BLAST analysis: Human, Gorilla, Orangutan, Gibbon, Monkey, Marmoset, Mouse, Rat, Bovine, Dog, Bat, Horse, Rabbit (95%); Elephant, Panda, Opossum, Turkey, Chicken (90%); Platypus, Lizard, Pufferfish, Zebrafish (85%); Xenopus (80%).
Format:	State: Liquid purified IgG fraction Purification: Immunoaffinity Chromatography Buffer System: PBS Preservatives: 0.09% Sodium Azide
Applications:	ELISA. Immunohistochemistry on Paraffin Sections: 5 µg/ml. Other applications not tested. Optimal dilutions are dependent on conditions and should be determined by the user.
Specificity:	Human SGK3. BLAST analysis of the peptide immunogen showed no homology with other human proteins.
Storage:	Store undiluted at 2-8°C for one month or (in aliquots) at -20°C to -80°C for longer. Avoid repeated freezing and thawing. Shelf life: one year from despatch.

Pictures:

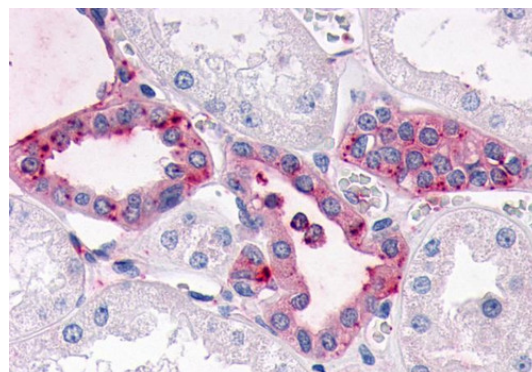
Anti-SGK3 antibody AP01037PU-N IHC of human pancreas, islet. Immunohistochemistry of formalin-fixed, paraffin-embedded tissue after heat-induced antigen retrieval.



Anti-SGK3 antibody IHC of human Pancreas, Carcinoma. Immunohistochemistry of formalin-fixed, paraffin-embedded tissue after heat-induced antigen retrieval.



Anti-SGK3 antibody IHC of human kidney. Immunohistochemistry of formalin-fixed, paraffin-embedded tissue after heat-induced antigen retrieval.



Anti-SGK3 antibody IHC of human kidney. Immunohistochemistry of formalin-fixed, paraffin-embedded tissue after heat-induced antigen retrieval.

