

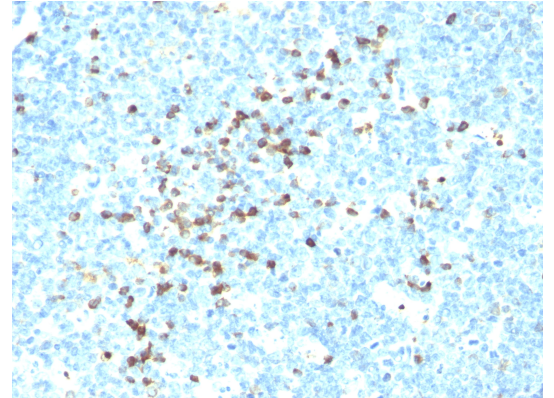
AM50121PU-S**Monoclonal Antibody to Human Lambda Light Chain - Purified**

| | |
|--------------------------------------|--|
| Quantity: | 0.1 mg |
| Concentration: | 0.2 mg/ml |
| Host / Isotype: | Mouse / IgG2a |
| Recommended Isotype Controls: | AM03096PU-N |
| Clone: | SPM559 |
| Immunogen: | Purified human IgG. Genename: IGL |
| Format: | State: Liquid purified IgG fraction from Bioreactor Concentrate Purification: Protein A/G Chromatography Buffer System: 10mM PBS Preservatives: 0.05% Sodium Azide Stabilizers: 0.05% BSA |
| Applications: | ELISA: Use Antibody without BSA for Coating. Flow Cytometry: 0.5-1 µg/10 ⁶ cells. Immunofluorescence: 1-2 µg/ml. Western Blot: 0.5-1 µg/ml. Immunoprecipitation: 0.5-1 µg/500 µg protein lysate. Immunohistochemistry on Frozen and Formalin-Fixed Paraffin Sections: 0.5-1 µg/ml for 30 minutes at RT. Staining of formalin-fixed tissues requires boiling tissue sections in 10mM Citrate buffer, pH 6.0, for 10-20 min followed by cooling at RT for 20 minutes. Positive Control: 293T, Raji or hPBL cells. Tonsil or Spleen. Other applications not tested. Optimal dilutions are dependent on conditions and should be determined by the user. |
| Molecular Weight: | ~22.5kDa |
| Specificity: | This MAb is specific to lambda light chain of immunoglobulin and shows no cross-reaction with lambda light chain or any of the five heavy chains. In mammals, the two light chains in an antibody are always identical, with only one type of light chain, kappa or lambda. The ratio of Kappa to Lambda is 70:30. However, with the occurrence of multiple myeloma or other B-cell malignancies this ratio is disturbed. Antibody to the lambda light chain is reportedly useful in the identification of leukemias, plasmacytomas, and certain non-Hodgkin's lymphomas. Demonstration of clonality in lymphoid infiltrates indicates that the infiltrate is malignant. Cellular Localization: Cell surface, cytoplasmic and secreted. Species: Human. Other species not tested. |

Storage: Store undiluted at 2-8°C.
Shelf life: one year from despatch.

General Readings: 1. Campbell JP et. al. J Immunol Methods. 2013;391(1-2):1-13.

Pictures: Formalin-paraffin tonsil stained with Human Lambda Light Chain Antibody Cat.-No AM50121PU (Clone SPM559). Note cell membrane & cytoplasmic staining.



Western blot analysis of Lambda Light Chain in human intestine using Human Lambda Light Chain Antibody Cat.-No AM50121PU (Clone SPM559).

