

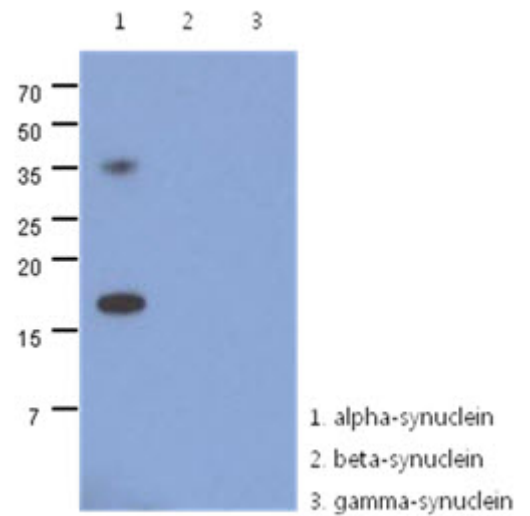
AM50030PU-S**Monoclonal Antibody to Alpha-Synuclein / SNCA - Purified**

Alternate names:	NACP, Non-A beta component of AD amyloid, Non-A4 component of amyloid precursor, PARK1
Quantity:	50 µl
Concentration:	1.0 mg/ml
Background:	Alpha-synuclein (amino acids 1-140), an acidic neuronal protein of 140 amino acids, is extremely heat-resistant and is natively unfolded with an extended structure primarily composed of random coils. alpha-synuclein has been suggested to be implicated in the pathogenesis of Parkinson's disease and related neurodegenerative disorders, and more recently, to be an important regulatory component of vesicular transport in neuronal cells.
Uniprot ID:	P37840
NCBI:	NP_000336
GeneID:	6622
Host / Isotype:	Mouse / IgG1
Recommended Isotype Controls:	SM10P (for use in human samples), AM03095PU-N
Clone:	AT1E10
Immunogen:	Recombinant human alpha-synuclein (1-140aa) purified from E. coli
Format:	State: Liquid purified Ig fraction Purification: Protein-A affinity chromatography Buffer System: PBS, pH 7.4 containing 0.02% Sodium Azide and 10% Glycerol
Applications:	ELISA. Western blot. Immunofluorescence. Other applications not tested. Optimal dilutions are dependent on conditions and should be determined by the user.
Specificity:	This antibody recognizes Human Alpha-Synuclein. Other species not tested.
Storage:	Store undiluted at 2-8°C for up to two weeks or (in aliquots) at -20°C for longer. Avoid repeated freezing and thawing. Shelf life: one year from despatch.
General Readings:	1. Jakes R, Spillantini MG, Goedert M. Identification of two distinct synucleins from human brain. <i>FEBS Lett.</i> 1994 May 23;345(1):27-32. PubMed PMID: 8194594. 2. Uéda K, Fukushima H, Masliah E, Xia Y, Iwai A, Yoshimoto M, et al. Molecular cloning of cDNA encoding an unrecognized component of amyloid in Alzheimer disease. <i>Proc Natl Acad Sci U S A.</i> 1993 Dec 1;90(23):11282-6. PubMed PMID: 8248242. 3. Kim J. Evidence that the precursor protein of non-A beta component of Alzheimer's

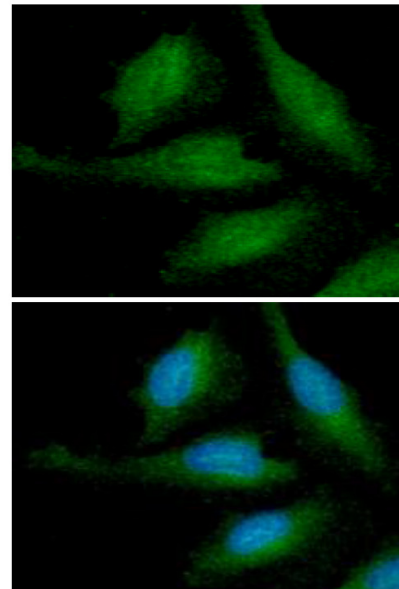
disease amyloid (NACP) has an extended structure primarily composed of random-coil. Mol Cells. 1997 Feb 28;7(1):78-83. PubMed PMID: 9085269.

Pictures:

The recombinant human synuclein family (alpha-, beta- and gamma-) proteins (100ng) were resolved by SDS-PAGE, transferred to PVDF membrane and probed with anti-human alpha-synuclein antibody (1:500). Proteins were visualized using a goat anti-mouse secondary antibody conjugated to HRP and an ECL detection system.



ICC/IF analysis of alpha-synuclein in HeLa cells line, stained with DAPI (Blue) for nucleus staining and monoclonal anti-human alpha-synuclein antibody (1:100) with goat anti-mouse IgG-Alexa fluor 488 conjugate (Green).



ICC/IF analysis of alpha-synuclein in LnCap cells line, stained with DAPI (Blue) for nucleus staining and monoclonal anti-human alpha-synuclein antibody (1:100) with goat anti-mouse IgG-Alexa fluor 488 conjugate (Green).

