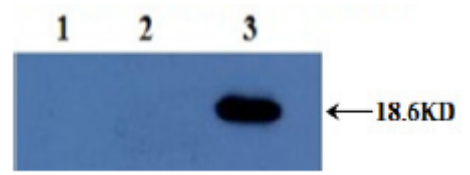


**AM33424PU-N****Monoclonal Antibody to Interleukin-10 / IL10 - Aff - Purified**

<b>Alternate names:</b>	CSIF, Cytokine synthesis inhibitory factor, IL-10, TGIF
<b>Quantity:</b>	0.5 mg
<b>Background:</b>	IL-10 is expressed by a variety of cells and plays an important role in inflammatory and immune responses. The biological activities of IL-10 include both immunosuppressive and immunostimulatory effects. It suppresses the production of pro-inflammatory cytokines by monocytes and neutrophils, and down-regulates the expression of activating and co-stimulatory molecules on monocytes and dendritic cells. It stimulates the growth of B cells and mast cells, and inhibits or enhances the activities of T cells depending on their activation conditions. Human IL-10 is a protein with 160 amino acids.
<b>Uniprot ID:</b>	<a href="#">P22301</a>
<b>NCBI:</b>	<a href="#">9606</a>
<b>GeneID:</b>	<a href="#">3586</a>
<b>Host / Isotype:</b>	Mouse / IgG2b
<b>Clone:</b>	4H2
<b>Immunogen:</b>	Purified recombinant Human IL-10 (Insight genomics). <b>Fusion Myeloma:</b> F0
<b>Format:</b>	<b>State:</b> Lyophilized purified IgG fraction <b>Purification:</b> Affinity Chromatography on Protein G <b>Buffer System:</b> Lyophilized from a solution in 0.01M PBS, pH 7.0 <b>Reconstitution:</b> Restore with doubled distilled water to a concentration of 1.0 mg/ml.
<b>Applications:</b>	<b>Indirect ELISA:</b> The anti-Human IL-10 antibody clone 4H2 reacts with recombinant Human IL-10. <b>Western blot:</b> The anti-Human IL-10 antibody clone 4H2 reacts with recombinant Human IL-10 antigen (Immunogen) ( <b>Figure 1</b> ) and with Human IL-10 expressed in 293T cells ( <b>Figure 2</b> ). Other applications not tested. Optimal dilutions are dependent on conditions and should be determined by the user.
<b>Specificity:</b>	This antibody reacts with Human IL-10. Other species not tested.
<b>Storage:</b>	Store lyophilized at 2-8°C for 6 months or at -20°C long term. After reconstitution store the antibody undiluted at 2-8°C for one month or (in aliquots) at -20°C long term. Avoid repeated freezing and thawing. Shelf life: one year from despatch.

**Pictures:**

**Figure 2.** Western blot using Anti-human IL-10 Antibody Clone 4H2 at 1/2,000 dilution.  
 Lane 1: Un-transfected 293T cells.  
 Lane 2: 239T cells transfected with human IL-6 gene.  
 Lane 3: 293T cells transfected with human IL-10 gene.



**Figure 1.** Lane 1&2: Recombinant human protein loaded at 10ng/well. Anti-Human IL-10 Antibody Clone 4H2 was used at 1/5,000 dilution for Western blot.

