

Monoclonal Antibody to EPHA2 / ECK - Purified

Alternate names:	Eph receptor A2, Ephrin type-A receptor 2, Epithelial cell kinase, Tyrosine-protein kinase receptor ECK
Catalog No.:	AM32431PU-S
Quantity:	0.1 ml
Background:	Ephrin type-A receptor 2 (EphA2) is a protein-tyrosine kinase in the ephrin receptor subfamily. EphA2 plays a role for angiogenesis and tumor neovascularization. High levels of EphA2 protein expression can be detected in some tumor cells such as breast carcinoma, bladder carcinoma, renal cell carcinoma (RCC), and non-small cell lung carcinoma (NSCLC). Inhibition of EphA2 kinase activity is considered for the treatment of various tumors such as RCC and NSCLC.
Uniprot ID:	P29317
NCBI:	NP_004422.2
GenID:	1969
Host / Isotype:	Rabbit / IgG
Recommended Isotype Controls:	PP501P
Clone:	SP169
Immunogen:	Synthetic peptide derived from the internal region of human EphA2 protein.
Format:	State: Liquid purified Ig fraction Purification: Protein A/G Chromatography Buffer System: PBS, pH 7.6 Preservatives: 0.09% Sodium Azide Stabilizers: 1% BSA
Applications:	FACS analysis: 1/100. <i>Positive Control:</i> A431 cell line. Immunohistochemistry on Formalin-Fixed, Paraffin-Embedded tissues: 1/100. Boil tissue section in EDTA buffer, pH 8.0 for 10 min followed by cooling at room temperature for 20 min. <i>Incubation Time:</i> 10 minutes at room temperature. <i>Positive Control:</i> Breast Carcinoma. Other applications not tested. Optimal dilutions are dependent on conditions and should be determined by the user.
Molecular Weight:	135 kDa
Specificity:	This antibody recognizes Human EPHA2 / ECK.
Species Reactivity:	Expected from sequence similarity: Monkey, Mouse.

Storage:

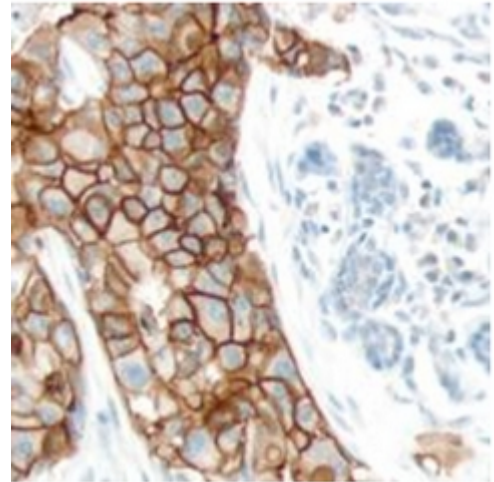
Store undiluted at 2-8°C.

DO NOT FREEZE!

Shelf life: one year from despatch.

Pictures:

Human breast carcinoma stained with anti-EPHA2 / ECK Antibody Cat.-No AM32431PU (Clone SP169).



Flow Cytometric analysis of Rabbit anti-EPHA2 / ECK Antibody Cat.-No AM32431PU (Clone SP169) in A431 (green) compare to negative control of Rabbit IgG (blue).

