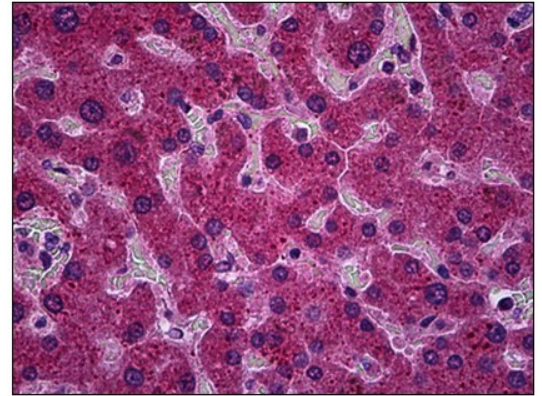


AM31765PU-N**Monoclonal Antibody to Protein phosphatase 1A / PPM1A - Purified**

Alternate names:	PP2C-alpha, PPPM1A, Protein phosphatase 2C isoform alpha, Protein phosphatase 1A
Quantity:	50 µg
Concentration:	0.5 mg/ml
Background:	Protein Phosphatase 1A alpha (PPM1A), a PP2C type serine/threonine phosphatase, is a monomeric enzyme whose phosphatase activity is dependent on magnesium. Two isoforms (alpha 1 and alpha 2) which differ at their carboxy terminus have been identified. Overexpression of rat PPM1A in yeast results in decreased growth rates and increased UV sensitivity. Human PPM1A has been shown to inhibit the activation of the stress-responsive p38 and JNK MAPK cascades. Additionally, the protein has been shown to directly associate with p38 in stress-stimulated mammalian cells. Thus, it is believed that PPM1A is essential for regulating cellular stress response in eukaryotes.
Uniprot ID:	P35813
NCBI:	NP_066283
GeneID:	5494
Host / Isotype:	Mouse / IgG2a
Recommended Isotype Controls:	AM03096PU-N
Clone:	4E11
Immunogen:	PPM1A antibody was raised against pPM1A (AAH26691, 1 a.a. ~ 383 a.a) full-length recombinant protein with GST tag. MW of the GST tag alone is 26 KDa.
Format:	State: Liquid purified Ig fraction Purification: Affinity chromatography Buffer System: PBS, pH 7.2
Applications:	ELISA. Immunohistochemistry on Paraffin Sections: 5 µg/ml. Western Blot: 1/500 - 1/1000. Other applications not tested. Optimal dilutions are dependent on conditions and should be determined by the user.
Specificity:	This antibody reacts to PPM1A. Species: Human. Other species not tested.
Storage:	Store the antibody undiluted at 2-8°C for one month or (in aliquots) at -20°C for longer. Avoid repeated freezing and thawing. Shelf life: one year from despatch.

Pictures:

Human Liver: Formalin-Fixed, Paraffin-Embedded (FFPE)



Detection limit for recombinant GST tagged PPM1A is 3 ng/ml as a capture antibody.

