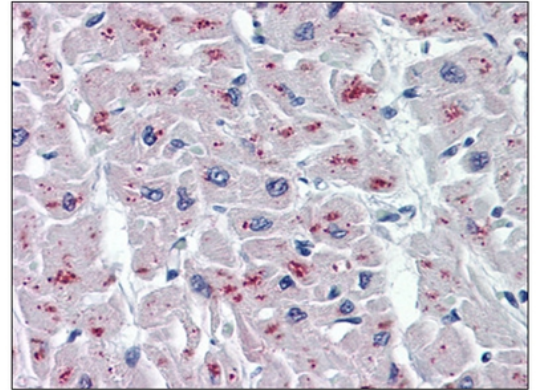


AM31723PU-N**Monoclonal Antibody to Acid ceramidase (25-125) - Purified**

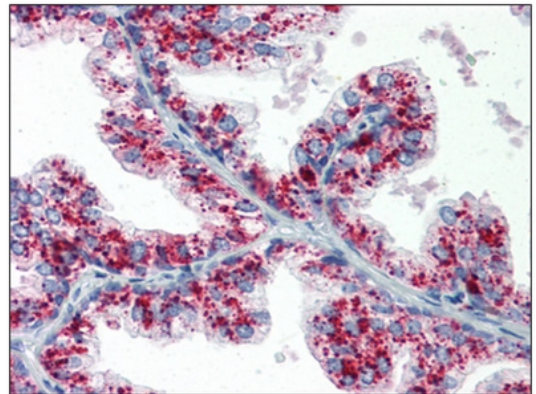
Alternate names:	ASAH, ASAH1, Acylsphingosine deacylase, N-acylsphingosine amidohydrolase, PHP32, Putative 32 kDa heart protein
Quantity:	50 µg
Concentration:	0.27 mg/ml
Background:	Sphingolipids are hydrolyzed by ceramidases to yield sphingosine and fatty acids. These ceramidases are classified according to the pH range that supports their optimal activity. ASAH1 is an acid ceramidase and key regulator of ceramide metabolism. Mutations in this gene results in Farber Lipogranulomatosis, a fatal human genetic disorder that results in the painful swelling of the joints and tendons and pulmonary insufficiency, while a complete knockout of its expression is lethal in mice. Recent studies have shown elevated levels of ASAH1 in Alzheimer's disease (AD) patients correlating with a reduction in sphingomyelin and elevation of ceramide. Pretreatment of cultured neurons with recombinant AHAH1 prevented the cells from undergoing A-beta (Ab)-induced apoptosis. Multiple isoforms of this protein are known to exist.
Uniprot ID:	Q13510
NCBI:	NP_001120977
GeneID:	427
Host / Isotype:	Mouse / IgG3
Recommended Isotype Controls:	AM03097PU-N
Clone:	1A7
Immunogen:	ASAH1 antibody was raised against ASAH1 (NP_808592, 25 a.a. ~ 125 a.a) partial recombinant protein with GST tag Remarks: MW of the GST tag alone is 26 KDa.
Format:	State: Liquid purified Ig fraction Purification: Protein A Chromatography Buffer System: PBS, pH 7.4
Applications:	ELISA. Immunohistochemistry on Paraffin Sections: 5 µg/ml. Western Blot: 1/500 - 1/1000. Other applications not tested. Optimal dilutions are dependent on conditions and should be determined by the user.
Specificity:	Recognizes Acid ceramidase ASAH1 at aa 25-125.
Species Reactivity:	Tested: Human
Storage:	Upon receipt, store undiluted (in aliquots) at -20°C. Avoid repeated freezing and thawing. Shelf life: one year from despatch.

Pictures:

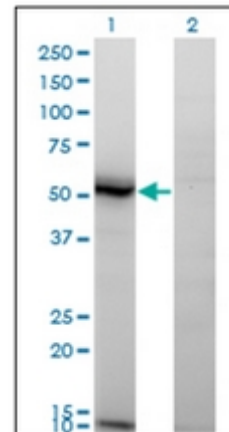
Human Heart: Formalin-Fixed, Paraffin-Embedded (FFPE)



Human Prostate: Formalin-Fixed, Paraffin-Embedded (FFPE)



Western Blot analysis of ASAHI expression in transfected 293T cell line. Lane 1: ASAHI transfected lysate (45 KDa). Lane 2: Non-transfected lysate.



Detection limit for recombinant GST tagged ASAH1 is approximately 1ng/ml as a capture antibody.

