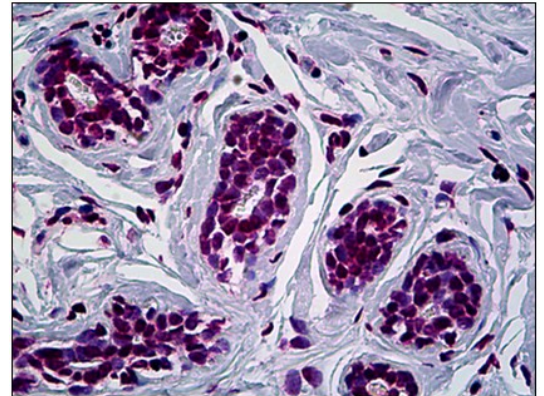


**AM31152PU-N****Monoclonal Antibody to RUNX1 (210-311) - Purified**

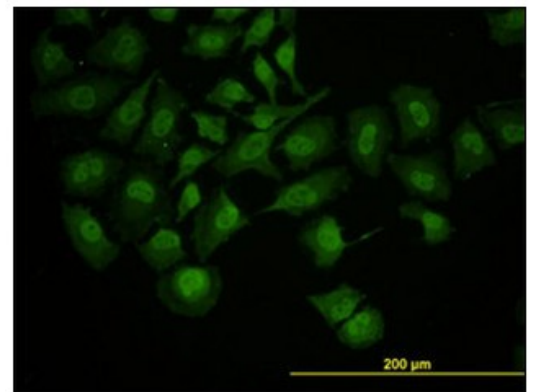
<b>Alternate names:</b>	1, AML-1, AML1, AML1-EVI-1, AMLCR1, Acute myeloid leukemia 1 protein, CBF-alpha-2, CBFA2, Core-binding factor subunit alpha-2, EVI-1, PEA2-alpha B, PEBP2-alpha B, PEBP2A2, Polyomavirus enhancer-binding protein 2 alpha B subunit, Runt-related transcription factor, SL3-3 enhancer factor 1 alpha B subunit, SL3/AKV core-binding factor alpha B subunit
<b>Quantity:</b>	50 µg
<b>Concentration:</b>	0.27 mg/ml
<b>Background:</b>	CBF binds to the core site, 5'-PYGPGGT-3', of a number of enhancers and promoters, including murine leukemia virus, polyomavirus enhancer, T-cell receptor enhancers, LCK, IL-3 and GM-CSF promoters. The alpha subunit binds DNA and appears to have a role in the development of normal hematopoiesis. Isoform AML-1L interferes with the transactivation activity of RUNX1. Acts synergistically with ELF4 to transactivate the IL-3 promoter and with ELF2 to transactivate the mouse BLK promoter.
<b>Uniprot ID:</b>	<a href="#">Q01196</a>
<b>NCBI:</b>	<a href="#">NP_001001890</a>
<b>GeneID:</b>	<a href="#">861</a>
<b>Host / Isotype:</b>	Mouse / IgG2b
<b>Recommended Isotype Controls:</b>	SM12P, AM03110PU-N
<b>Clone:</b>	4E7
<b>Immunogen:</b>	RUNX1 (NP_001001890, 210 a.a. ~ 311 a.a) partial recombinant protein with GST tag <b>Remarks:</b> MW of the GST tag alone is 26 KDa.
<b>Format:</b>	<b>State:</b> Liquid purified Ig fraction <b>Purification:</b> Affinity Chromatography on Protein A <b>Buffer System:</b> PBS, pH 7.4
<b>Applications:</b>	<b>ELISA.</b> <b>Immunofluorescence:</b> 10 µg/ml. <b>Immunohistochemistry on Paraffin Sections:</b> 5 µg/ml. <b>Western Blot.</b> Other applications not tested. Optimal dilutions are dependent on conditions and should be determined by the user.
<b>Specificity:</b>	This antibody reacts to RUNX1 at aa210-311.
<b>Species Reactivity:</b>	<b>Tested:</b> Human, Mouse
<b>Storage:</b>	Upon receipt, store undiluted (in aliquots) at -20°C. Avoid repeated freezing and thawing. Shelf life: one year from despatch.

**Pictures:**

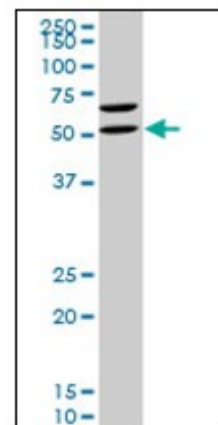
Human Breast: Formalin-Fixed, Paraffin-Embedded (FFPE)



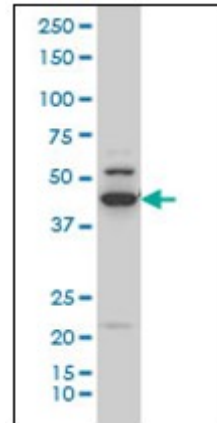
Immunofluorescence of monoclonal antibody to RUNX1 on HeLa cell.  
[antibody concentration 10 µg/ml]



RUNX1 monoclonal antibody, clone 4E7.  
Western Blot analysis of RUNX1 expression in NIH/3T3.



RUNX1 monoclonal antibody, clone 4E7  
 Western Blot analysis of RUNX1  
 expression in Hela NE.



Detection limit for recombinant GST  
 tagged RUNX1 is approximately 1ng/ml as  
 a capture antibody.

